



Unified National Artificial Insemination Program (UNAIP)

For further information, you may visit the nearest

- Department of Agriculture Regional Field Office;
- Provincial/City Veterinary/Agriculture Office;
- City/Municipal Agriculture Office; or the
- AI Technician

You may also contact your nearest Artificial Insemination (AI) Technician in the locality:

Name: _____
Office: _____
Contact No.: _____



Published by:



National Artificial Breeding Center
Bureau of Animal Industry
Lot 184, Dalwangan
Malaybalay City, 8700 Bukidnon
Email: nbcrcbukidnon@bai.gov.ph

and



Agricultural Training Institute
Regional Training Center 10
El Salvador City, 9017 Misamis Oriental
Email: rtc10.dcc@ati.da.gov.ph/rtc10.ocd@ati.da.gov.ph
Contact no: (088) 859-2289/ (088) 880-0959
Website: <http://www.ati.da.gov.ph/ati-10>
www.e-ension.gov.ph

ARTIFICIAL INSEMINATION IN CATTLE





What is AI?

Artificial Insemination or AI is the process of depositing spermatozoa in the female genitalia by use of instruments rather than by natural service.

Why use AI?

- Use of semen from top quality and high producing bulls injected into cows guarantees better meat and milk;
- Assures services for the cows even if the bulls are far from the area;
- Reduces the spread of reproductive diseases;
- Eliminates the expenses and risks of keeping your own bulls;
- Stimulates the keeping of accurate and reliable breeding records.

What are things you need to know before availing AI services?

- Observe for the cow's 'heat'. A normal heat or estrus cycle is about 21 days average.
- Heat period lasts for about 10-24 hours with about 18 hours average.

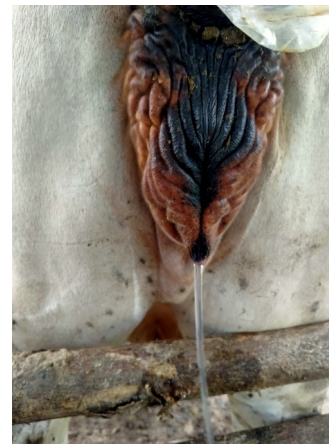
You may see one or all of these heat signs at the same time:



Standing still when mounted by other (standing heat)



Swelling & reddening of vulva



Clear mucus discharge

As thumb rule, cows observed in heat in the morning should be inseminated in the afternoon of the same day, cows observed in heat in the afternoon should be inseminated morning of the following day.



What are the considerations in adopting AI services?

- Cows/ heifers in good health and body condition
- Correct heat observation/detection
- Proper timing of insemination
- Availability of breeding chute/rack
- Reliable record keeping

Sire Breeds for AI

Brahman



Red Brahman



SimBrah



Wagyu



Holstein



Charolais

