

Provincial Commodities Investment Plan (PCIP): Precursor of PAFES

- a 3-year rolling DA-PLGU collaborative plan based on the Value Chain Analysis (VCA) of priority commodities;
- mapped-out with strong participation of various stakeholders in the value chain;
- anchor of Collaborative Provincial Agriculture and Fisheries Extension Program (CPAFEP) – basis of the Philippine Rural Development Project's (PRDP) I-BUILD & I-REAP interventions.

Process of mapping out CPAFEP

- PAFEC undertakes a program development workshop for stakeholders
 - o involves various stakeholders at both municipal and provincial levels
- Main references for CPAFEP are from:
 - o Provincial Commodities Investment Plan (PCIP)
 - o Agriculture and Fisheries Modernization Investment Plan (AFMIP)
 - o Strategic plan, etc.
- Results of RRA used as an input
 - o provide current information about the province
- Composed of 2 parts:
 - o priority commodities of PCIP
 - o strategic support services
- Integrates DA strategies, thrusts, and flagship programs

Framework for mapping out CPAFEP



Strategic support services

Extension services to support implementation of CPAFEP

1. Agro-enterprise development along PCIP

- to increase income and productivity of stakeholders

2. Technology development, adaptation, and demonstration

- new, improved, and climate-resilient agri-fishery technologies

3. Massive multi-level capacity building

- retooling of AEWs, farmers, fishers, women, and the youth

4. Media-ICT assisted knowledge sharing

- timely provision of technical information, market price, and weather advisory

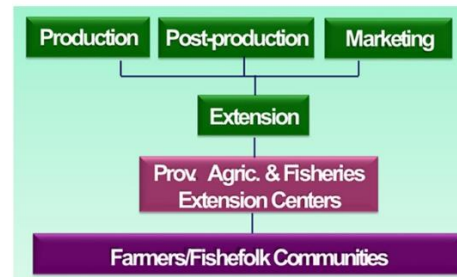
5. Institutional strengthening

- incentives and benefits for AEWs – more and better physical resources at the LGU level

Private sector participation in PAFES

1. Identifying AFE program priorities
2. Linking farmers/fisherfolk with markets
3. Agro-enterprise development / digital advisory services
4. Input supply & custom service provision
5. Capacity building & community mobilization

PAFES converges AF support services in the value chain



Key Terms and Definitions

- AFE – Agriculture and Fisheries Extension
- AFIP – Agriculture and Fisheries Investment Plan
- CPAFEP – Collaborative Provincial Agriculture and Fisheries Extension Program
- PAFEC – Provincial Agriculture and Fisheries Extension Center
- PAFES – Province-led Agriculture and Fisheries Extension System
- PCIP – Provincial Commodities Investment Plan
- PRDP – Philippine Rural Development Project
- RRA – Rapid Rural Appraisal
- VCA – Value Chain Analysis

Localized and Reproduced by
AGRICULTURAL TRAINING INSTITUTE
 REGIONAL TRAINING CENTER X



THE AGRICULTURAL TRAINING INSTITUTE IS ISO 9001:2015 CERTIFIED
 ATI Compound, Poblacion, El Salvador City, Misamis Oriental 9017
 Tel. Nos. (088) 859-2289 / (088) 880-0959
 e-mail: rtc10.dcc@ati.gov.ph / atirtc10.ocd@ati.gov.ph
 Website: <http://www.ati.da.gov.ph/ati.10> www.e-extension.gov.ph

@atinorthmin



AGRICULTURAL TRAINING INSTITUTE
 REGIONAL TRAINING CENTER X

Province-led Agriculture & Fisheries Extension Systems (PAFES)



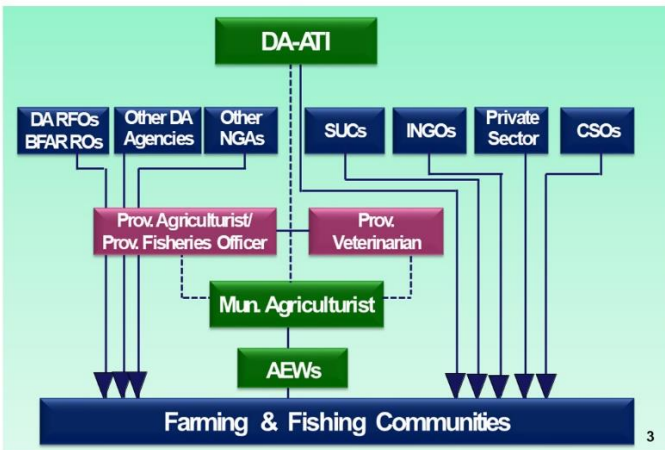
OneDA reform agenda

PAFES is a strategy under the Consolidation Pillar of the OneDA Reform Agenda.



A challenged Agriculture and Fisheries Extension (AFE) system

In the current AFE system in the country, there is a disconnect between the deliverers of extension to our common clients and the farming and fishing communities.



Modern AFE systems

An effective, efficient, and responsive extension system is a paramount requisite in modernizing Philippine agriculture.

1. Supporting rural livelihoods
 - by sharing science-based knowledge and innovations through strong research-extension-farmer/ fisher folk linkages
2. Multiple sources of innovations
 - this uses science and improved technologies as engines

3. Pluralistic institutional arrangement

- enhance LGU's capacities in delivering interventions

4. Market-demand driven

- viable enterprises identified in the Provincial Commodities Investment Plan (PCIP) shall be established in farming and fishing communities

5. Use of digital enabled tools

- this maximizes reach and ease in doing business

EO 138: The Mandanas-Garcia doctrine

Full devolution of certain functions of the executive branch to local governments is hastened and strengthened by the ballooned budget of the LGUs.

-IRA of LGUs not limited to national internal revenue taxes but includes customs duties

-Expected IRA of LGUs in 2022 is PhP234 B

-Devolved functions to LGUs shall be permanently taken out from NGAs such as health, social welfare, agricultural extension and others

-NGAs set national policy & service delivery standards

-NGAs assist, oversee and monitor LGUs

A Province-led AFE system

PAFES shall be mainstreamed as the modality in the implementation of DA's banner programs in the provinces.



Features of PAFES

The province will serve as an extension hub that synchronizes agricultural plans and programs as well as orchestrate the activities of the various stakeholders.

- Province-led AFE program
- Province is the unit of AFE operation
- Collaborative AFE management
- Private sector-Civil Society Organization (CSO) involvement
- National (DA) & local (PLGU) co-financing
- a mechanism to strengthen partnership in extending agriculture and fisheries extension support

Key steps in establishing PAFES

PAFES establishment aims to lay down the roles and responsibilities to be undertaken by the implementing agencies in developing and pursuing the flagship initiatives of the CPAFEP.

1. Establish initial engagement with Governor.
 - shall be pursued through a series of consultation meetings and workshops in the province
2. Conduct of stakeholder consultations
 - shall be conducted to further operationalize the concept and establishment of PAFES - ensure the acceptance and active participation of the identified stakeholders
 - shall utilize various platforms
3. MOA Signing
 - Formalizes its establishment through a ceremonial signing activity or via referendum in compliance with CoVID-19 pandemic safety protocols
4. Establishment of Provincial AFE Center
 - shall be created to serve as the operational arm of PAFES to reflect its pluralistic nature and elevate its institutional profile since it will eventually integrate offices of the PA, PV, and PFA
5. Conduct of program development workshop
 - Support to the implementation

Provincial AFE Center

(Ilocos Norte model)

