






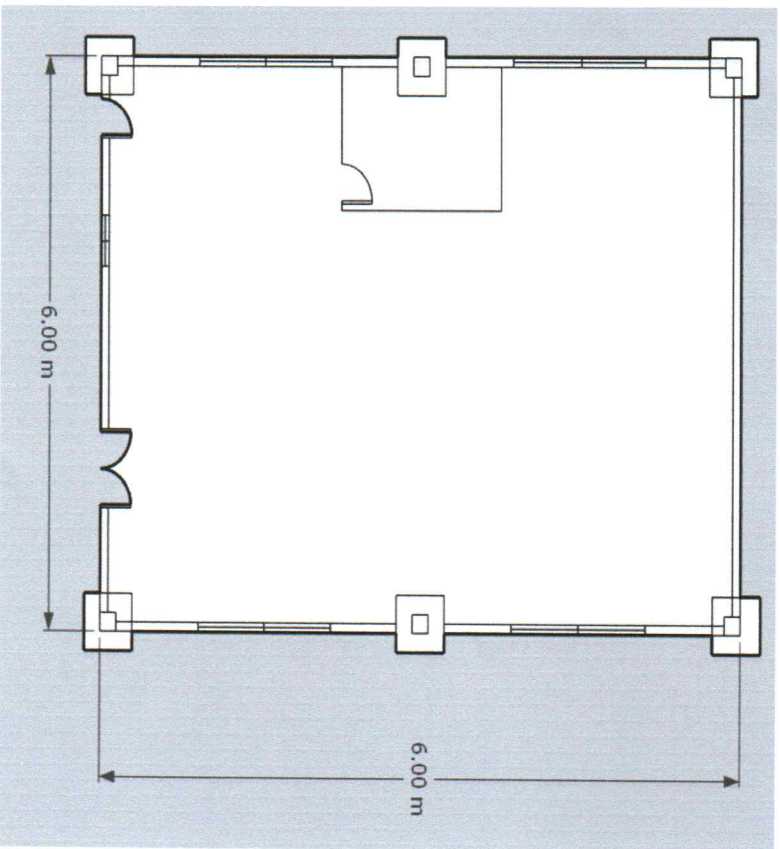
PERSPECTIVE

		<b>PROJECT/LOCATION:</b> ESTABLISHMENT OF MEAT HUB FACILITY		<b>PREPARED BY:</b>  ENGR. SHEENA F. FADEROGAVA Technical Assistant		<b>CHECKED BY:</b>  JAYSON B. NIDUA Livestock Focal Person		<b>RECOMMENDING APPROVAL:</b>  REMALYN C. GULEN OIC-PAS Chief		<b>APPROVED BY:</b>  JAYVEE BRYAN G. CARILLO, Ph.D. OIC-Center Director		<b>SHEET NO:</b> <b>1/9</b>
---	--	--	--	---	--	--	--	---	--	---	--	--------------------------------



<b>PROJECT/LOCATION:</b>		<b>PREPARED BY:</b>		<b>CHECKED BY:</b>		<b>RECOMMENDING APPROVAL:</b>		<b>APPROVED BY:</b>		<b>SHEET NO:</b>
<b>ESTABLISHMENT OF MEAT HUB FACILITY</b>		 <b>ENGR. SHEENA F. FADEROGAYA</b>		 <b>JAYSON B. NIDUA</b>		 <b>REINALYN C. GULEN</b>		 <b>JAYVEE BRYAN G. CARILLO, Ph.D.</b>		<b>2/9</b>
ATI-RTC III, Dinalupihan, Bataan		Technical Assistant		Livestock Focal Person		OIC-PAS Chief		OIC-Center Director		

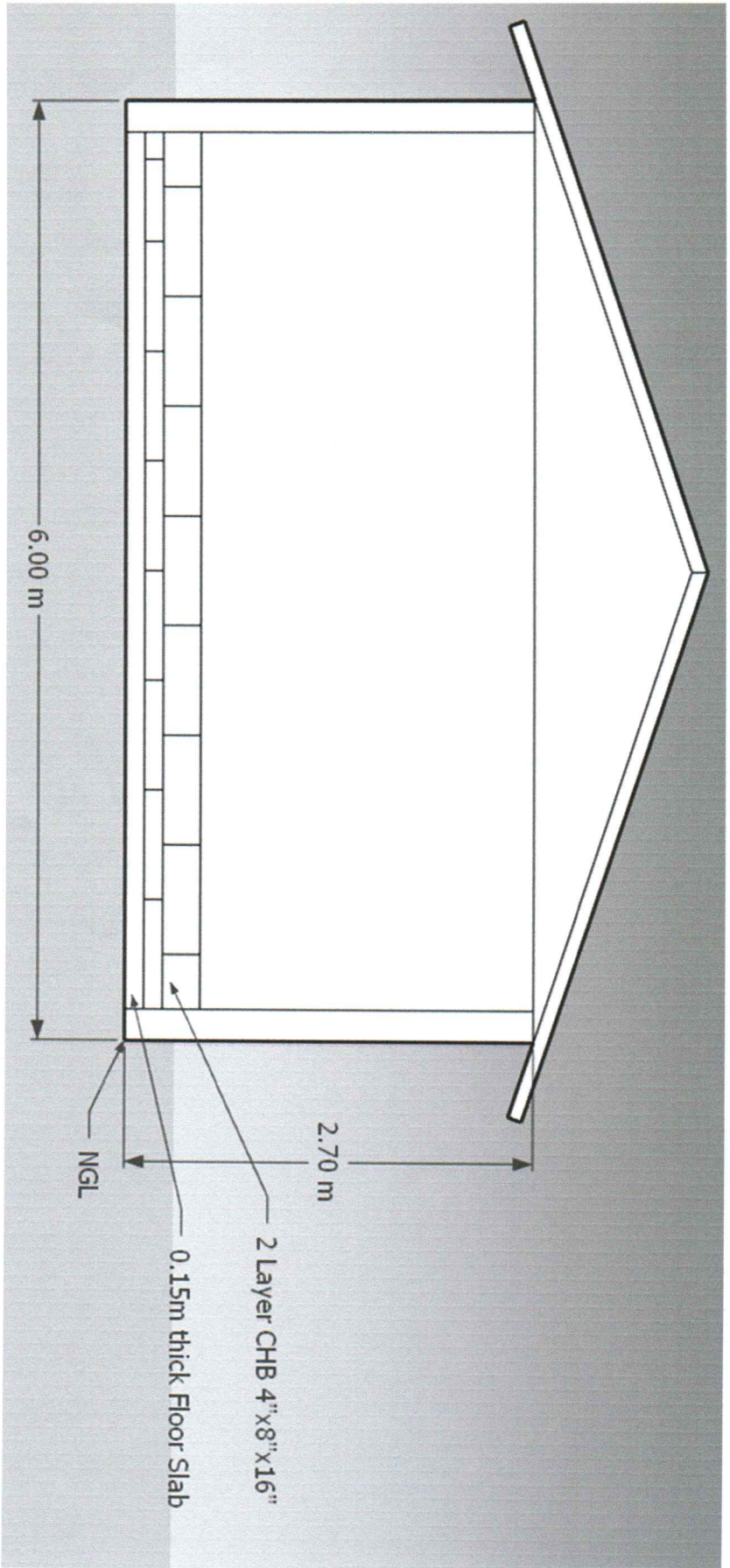
### FLOOR PLAN



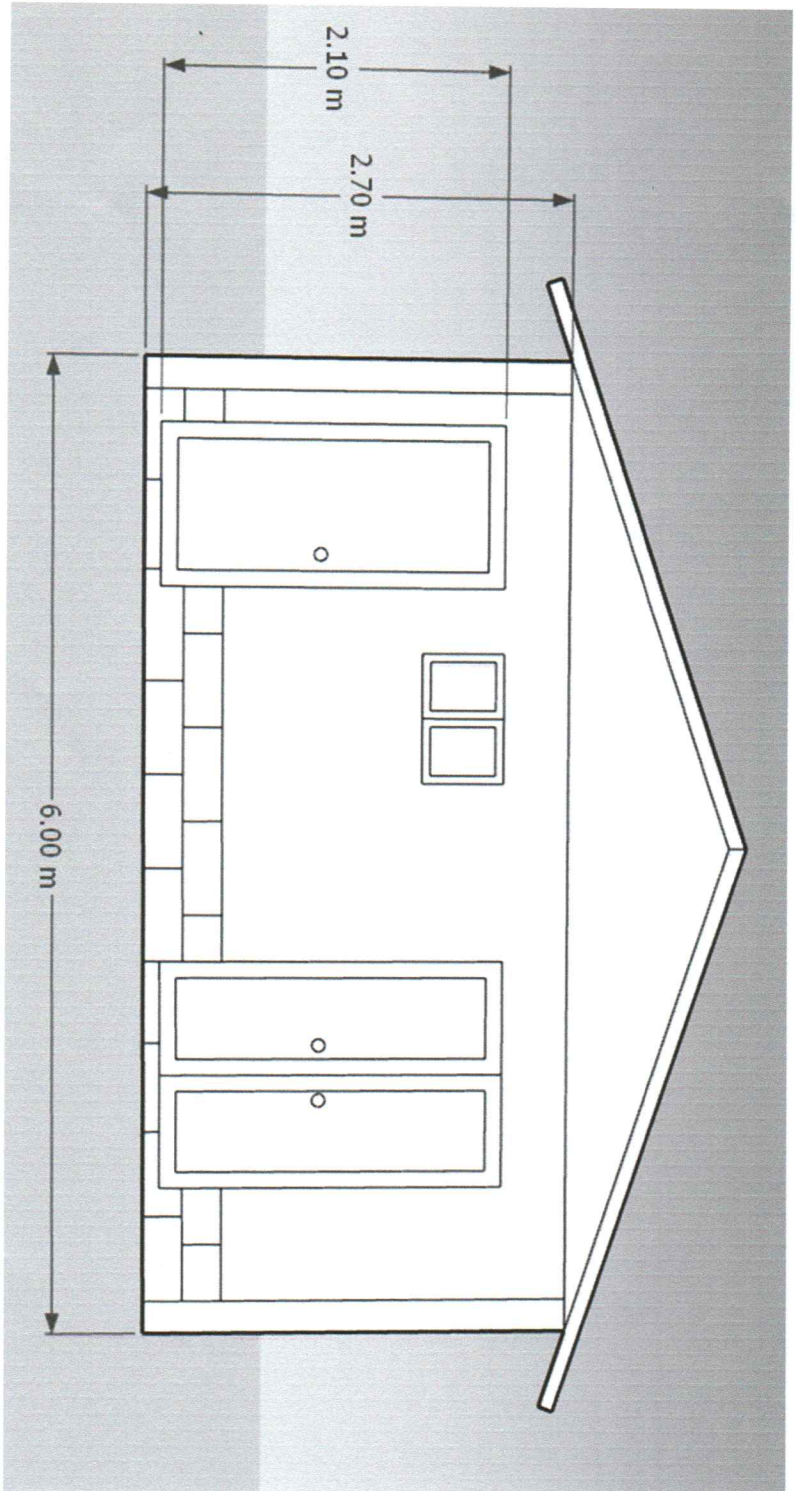









PROJECT/LOCATION:	ESTABLISHMENT OF MEAT HUB FACILITY	PREPARED BY:	ENGR. SHEENA F. FADEROGAYA <i>[Signature]</i>	CHECKED BY:	JAYSON B. NBUA <i>[Signature]</i>	RECOMMENDING APPROVAL:	RENALYN C. GULEN <i>[Signature]</i>	APPROVED BY:	JAYVEE BRYAN G. CARILLO, Ph.D. <i>[Signature]</i>	SHEET NO:	3/9
ATT-RTC III, Dinalupihan, Bataan	Technical Assistant	Livestock Focal Person	OIC-PAS Chief	OIC-Center Director							



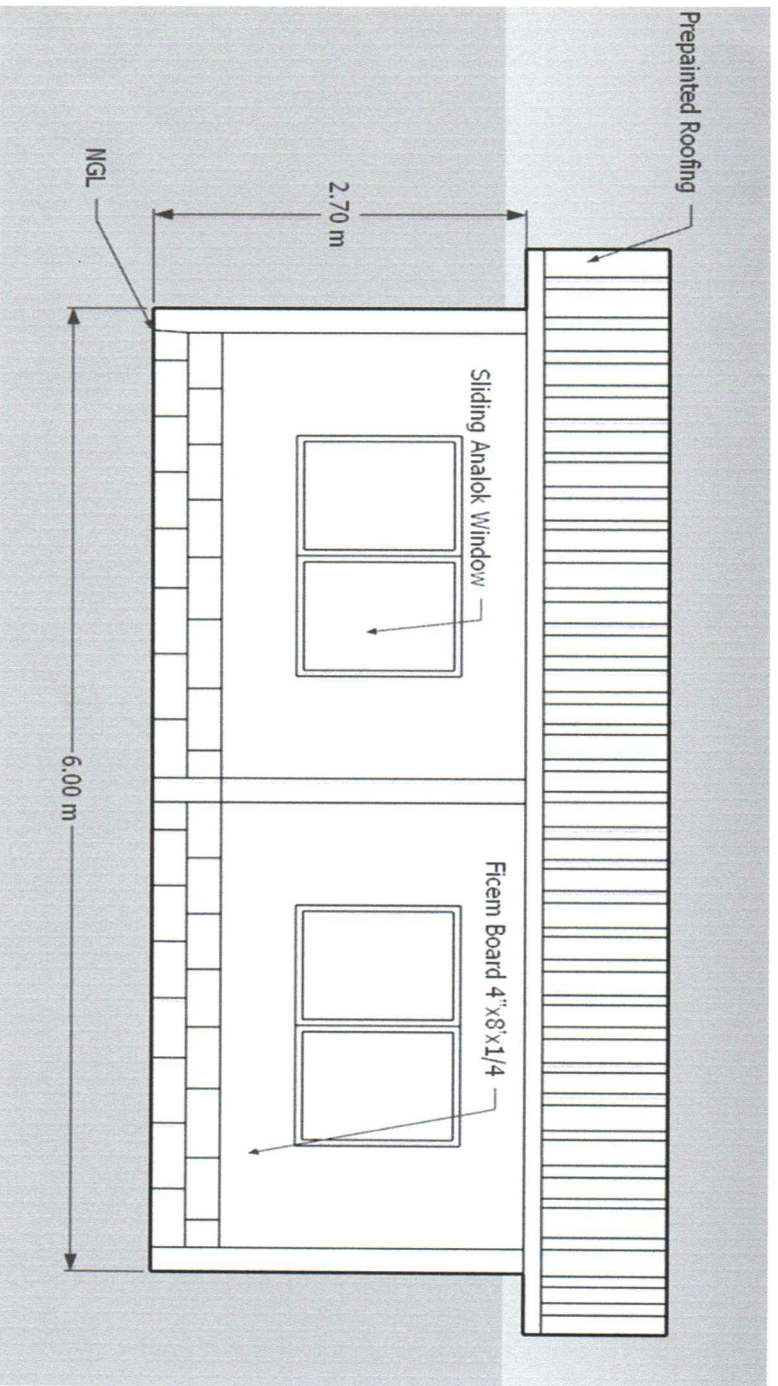
REAR ELEVATION








FRONT ELEVATION

		<b>PROJECT/LOCATION:</b> ESTABLISHMENT OF MEAT HUB FACILITY		<b>PREPARED BY:</b>  ENGR. SREENA F. FADEROGAYA Technical Assistant		<b>CHECKED BY:</b>  JAYSON B. NIDUA Livestock Focal Person		<b>RECOMMENDING APPROVAL:</b>  REINALYN C. GULEN OIC-PAS Chief		<b>APPROVED BY:</b>  JAYVEE BRYAN G. CARILLO, Ph.D. OIC-Center Director		<b>SHEET NO.:</b> <b>4/9</b>
---	--	--	--	--	--	--	--	--	--	---	--	---------------------------------



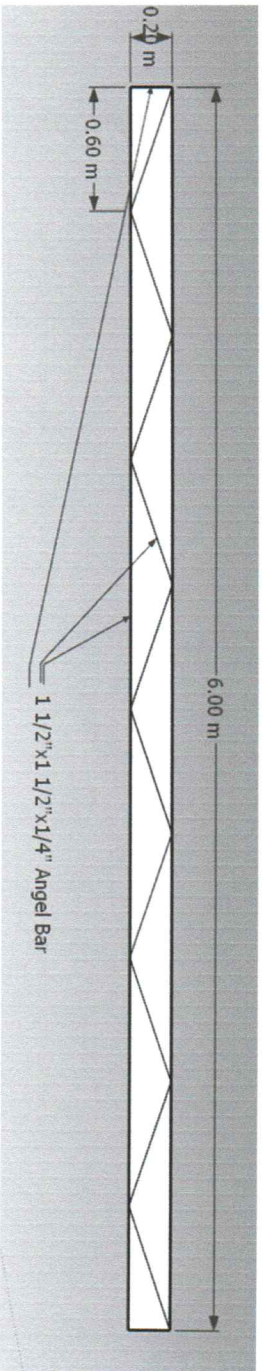
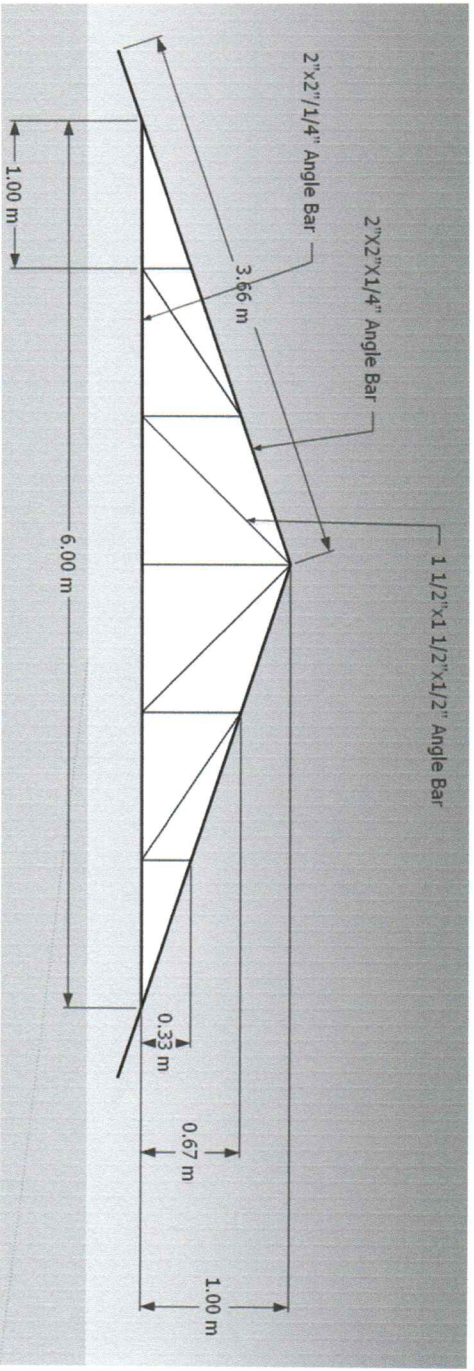


**LEFT AND RIGHT SIDE ELEVATION**

		<b>PROJECT/LOCATION:</b> ESTABLISHMENT OF MEAT HUB FACILITY		<b>PREPARED BY:</b>  ENGR. SHEENA F. FADEROGAYA		<b>CHECKED BY:</b>  JAYSON B. NIDUA		<b>RECOMMENDING APPROVAL:</b>  RENALYN C. GULEN		<b>APPROVED BY:</b>  JAYVEE BRYAN G. CARILLO, Ph.D.		<b>SHEET NO:</b> <b>5/9</b>
ATI-RTC III, Dinalupihan, Bataan		Technical Assistant		Livestock Focal Person		OIC-PAS Chief		OIC-Center Director				

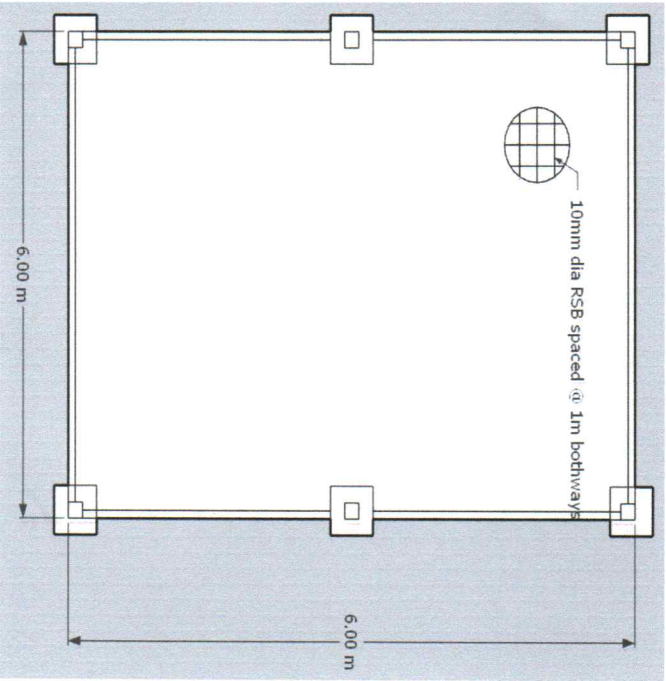


<b>PROJECT/LOCATION:</b>		<b>PREPARED BY:</b>		<b>CHECKED BY:</b>		<b>RECOMMENDING APPROVAL:</b>		<b>APPROVED BY:</b>		<b>SHEET NO:</b>	
ESTABLISHMENT OF MEAT HUB FACILITY		ENGR. SHEENA F. FADEROGAYA		JAYSON B. NIDUA		REINALYN C. GULEN		JAYVEE BRYAN G. CARILLO, Ph.D.		6/9	
ATI-RTC III, Dinalupihan, Bataan		Technical Assistant		Livestock Focal Person		OIC-PAS Chief		OIC-Center Director			

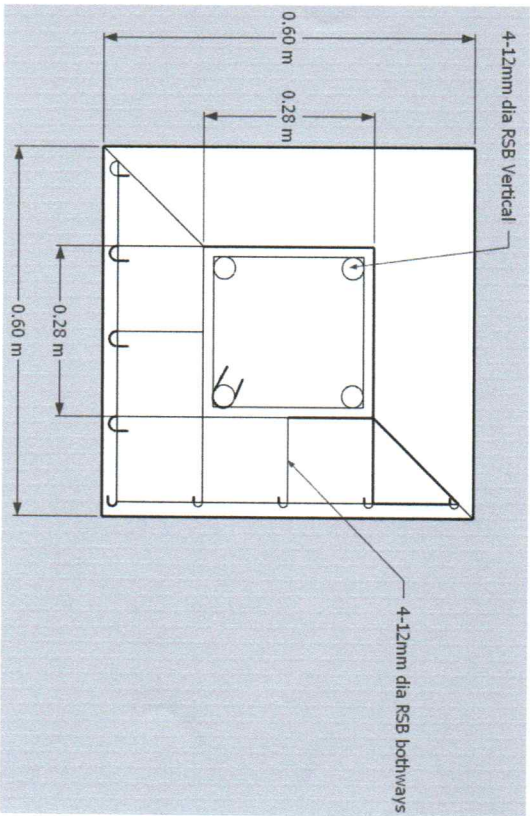


**TRUSSES**

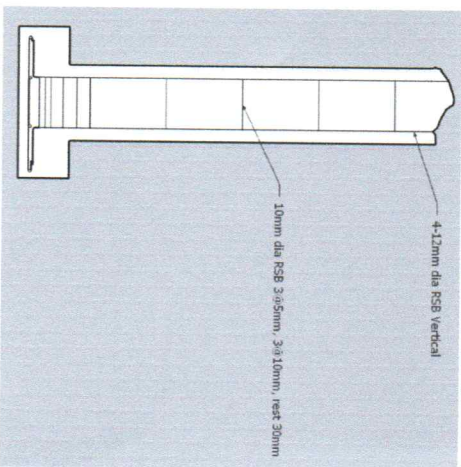





**GROUND FLOOR PLAN**







**COLUMN-FOUNDATION PLAN**

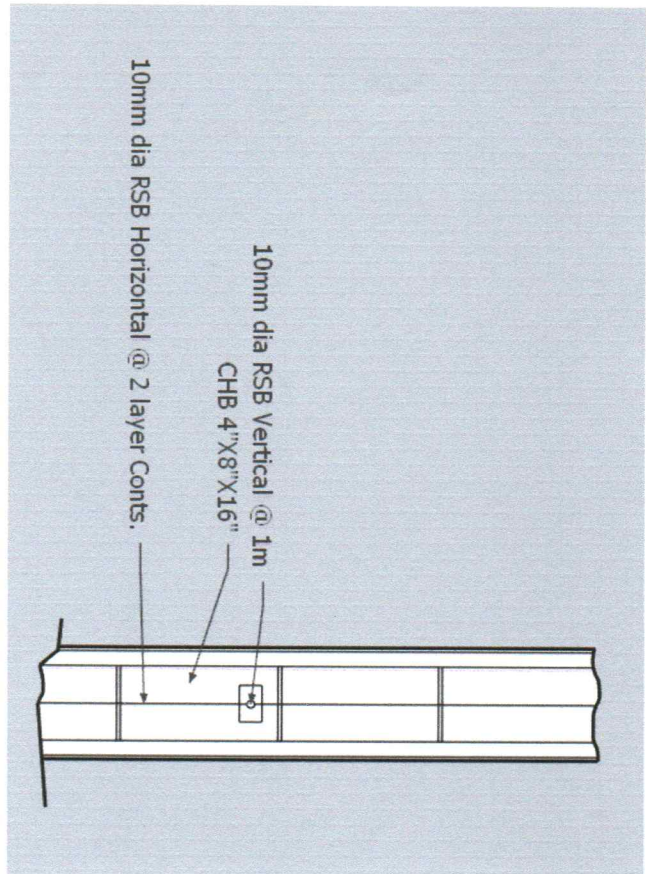


	PROJECT/LOCATION:	PREPARED BY:	CHECKED BY:	RECOMMENDING APPROVAL:	APPROVED BY:	SHEET NO:
	ESTABLISHMENT OF MEAT HUB FACILITY	ENGR. SHEENA F. FADEROGAYA <i>[Signature]</i>	JAYSON B. NIBUA <i>[Signature]</i>	REINALYN C. GULEN <i>[Signature]</i>	JAYVEE BRYAN G. CARILLO, Ph.D. <i>[Signature]</i>	7/9
ATI-RTC III, Dinalupihan, Bataan	Technical Assistant	Livestock Focal Person	OIC-PAS Chief	OIC-Center Director		



<b>PROJECT/LOCATION:</b>	<b>ESTABLISHMENT OF MEAT HUB FACILITY</b>					<b>SHEET NO:</b>
<b>PREPARED BY:</b>	 ENGR. SYDENA P. FADEROGAYA Technical Assistant	<b>CHECKED BY:</b>	 JAYSON B. NIDUA Livestock Focal Person	<b>RECOMMENDING APPROVAL:</b>	 REINALYN C. GUEN OIC-PAS Chief	<b>8/9</b>
<b>ATI-RTC III, Dinalupihan, Bataan</b>				<b>APPROVED BY:</b>	 JAYVEE BRYAN G. CARILLO, Ph.D. OIC-Center Director	

### CHB LAYING







<b>PROJECT/LOCATION:</b> ESTABLISHMENT OF MEAT HUB FACILITY		<b>PREPARED BY:</b>  ENGR. SJEENA F. FADEROGAVA Technical Assistant		<b>CHECKED BY:</b>  JAYSON B. NIDDA Livestock Focal Person		<b>RECOMMENDING APPROVAL:</b>  REYNALDYN C. GULEN OIC-PAS Chief		<b>APPROVED BY:</b>  JAYVEE BRYAN G. CARILLO, Ph.D. OIC-Center Director		<b>SHEET NO.:</b>  <b>9/9</b>
--	--	--	--	---	--	--	--	--	--	-------------------------------------

### ROOF FRAMING PLAN

