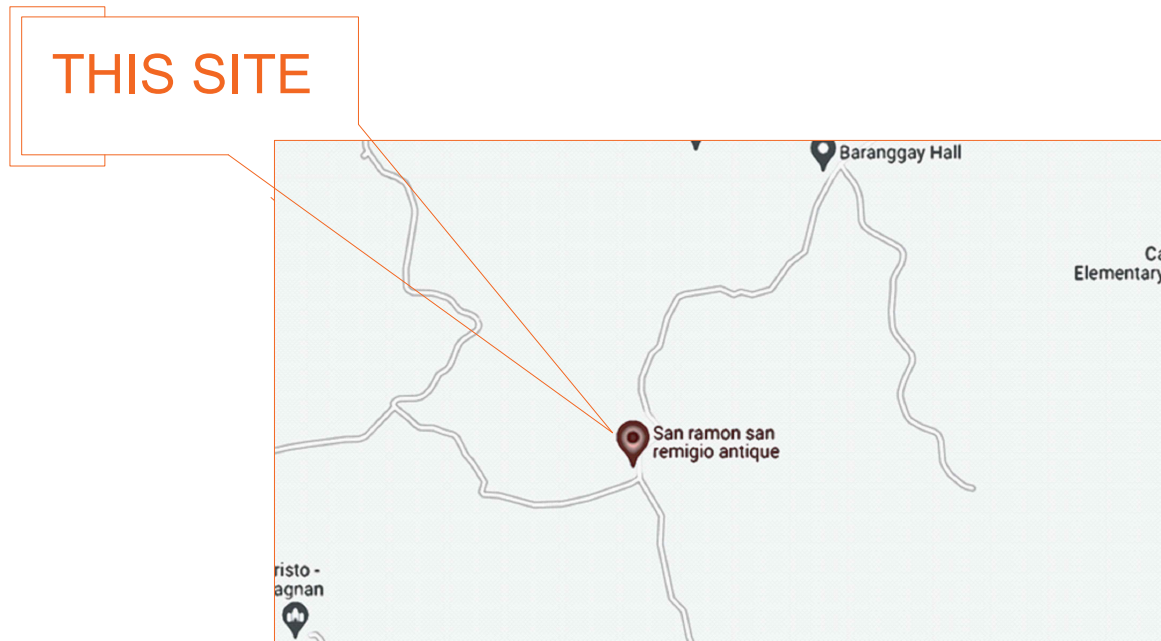
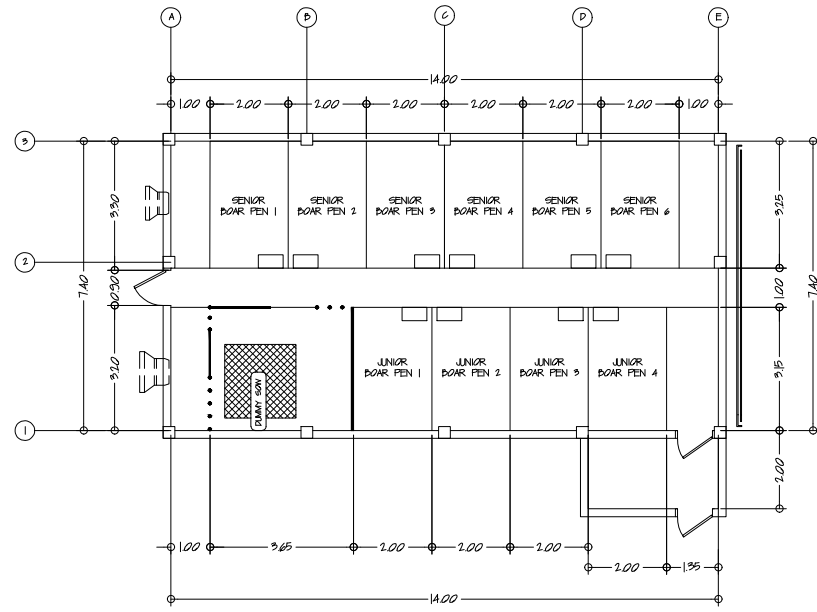


SITE DEVELOPMENT PLAN
SCALE: 1/1000



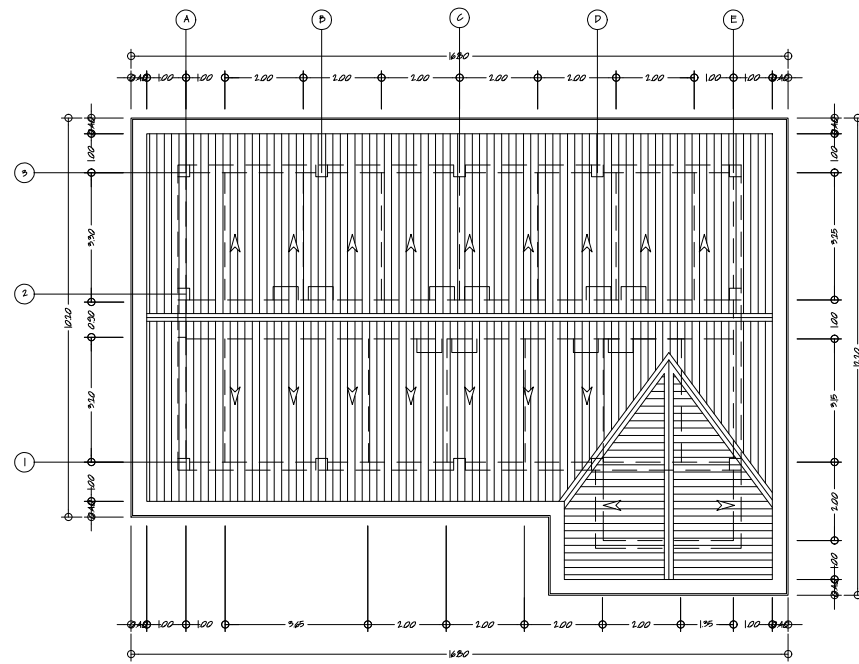
VICINITY MAP
SCALE: 1/1000

| | | | | | | |
|---------------------------|------------|--------------------------------------|-------------------------|------------------------------|----------------|-----------|
| CIVIL ENGINEER/ARCHITECT: | | PROJECT TITLE : | APPROVED BY | SHEET CONTENT: ARCHITECTURAL | DRAFTED BY: CA | SHEET NO: |
| | | SWINE AI SA BARANGAY (SWAIB) PROJECT | DR. RUTH MICALAT-SONACO | AS SHOWN | CHECKED BY: RA | AI |
| PRG. NO: | VALIDITY : | | PROGRAM DIRECTOR | | DATE: | |
| IAPGA NO: | DATE : | | | | REVISION NO: | |

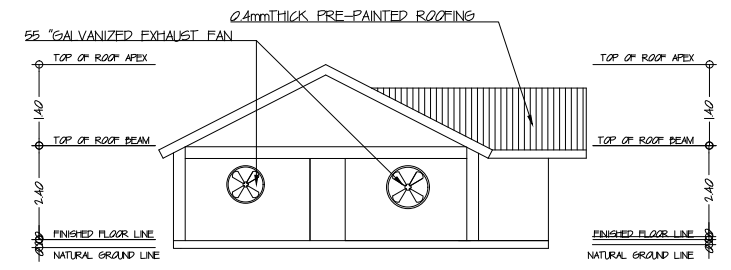


NOTE: SPACING OF G.I POST IS 120M DIV ON DUMMY SOW.

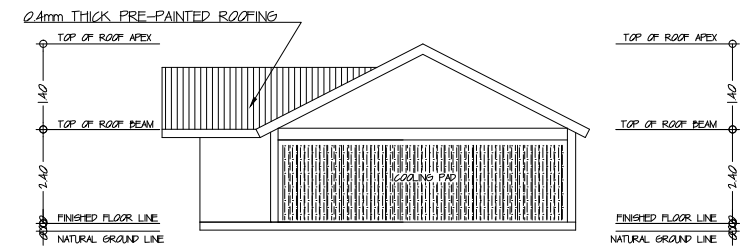
1 GROUND FLOOR PLAN
A-2 SCALE 15



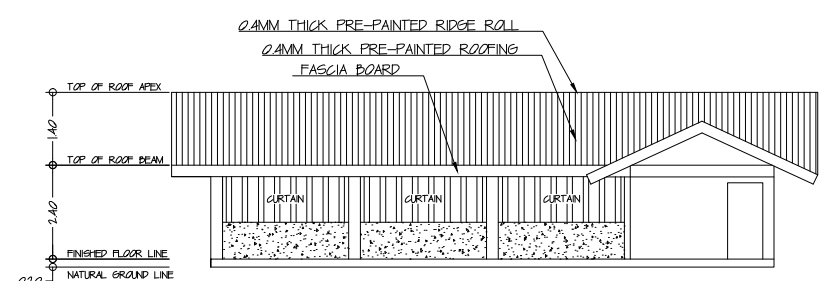
1 ROOF PLAN
A-2 SCALE 15



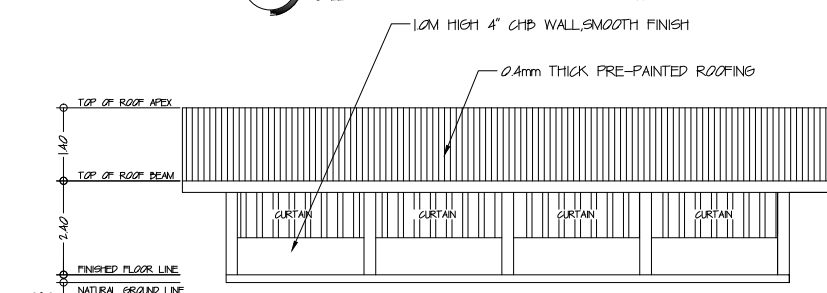
2 FRONT VIEW ELEVATION
A-2 SCALE NTS



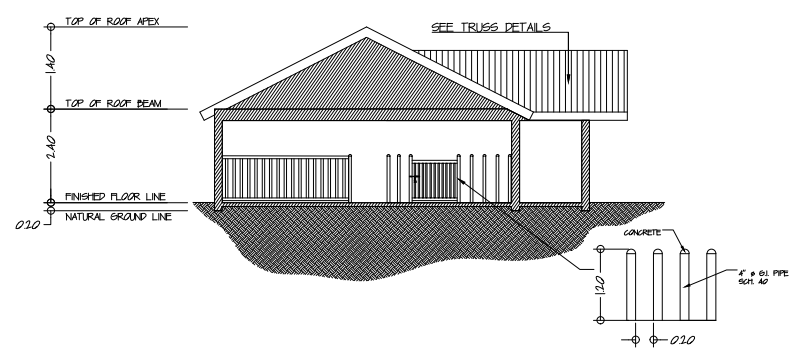
3 REAR VIEW ELEVATION
A-2 SCALE NTS



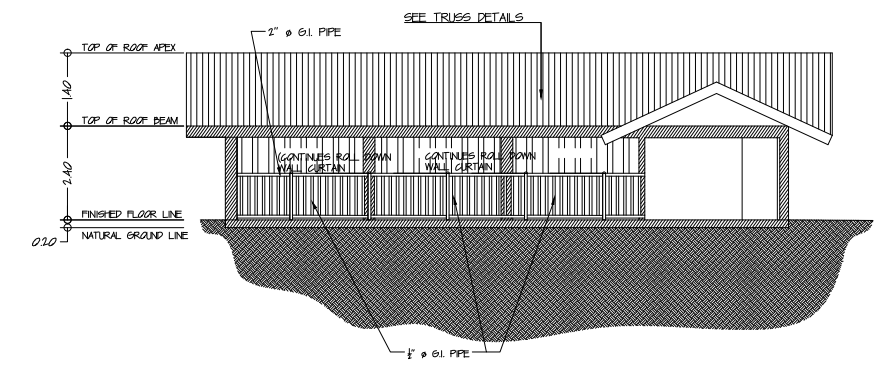
4 RIGHT SIDE ELEVATION
A-2 SCALE 15



5 LEFT SIDE ELEVATION
A-2 SCALE 15



1 CROSS VIEW SECTION
A-2 SCALE 15

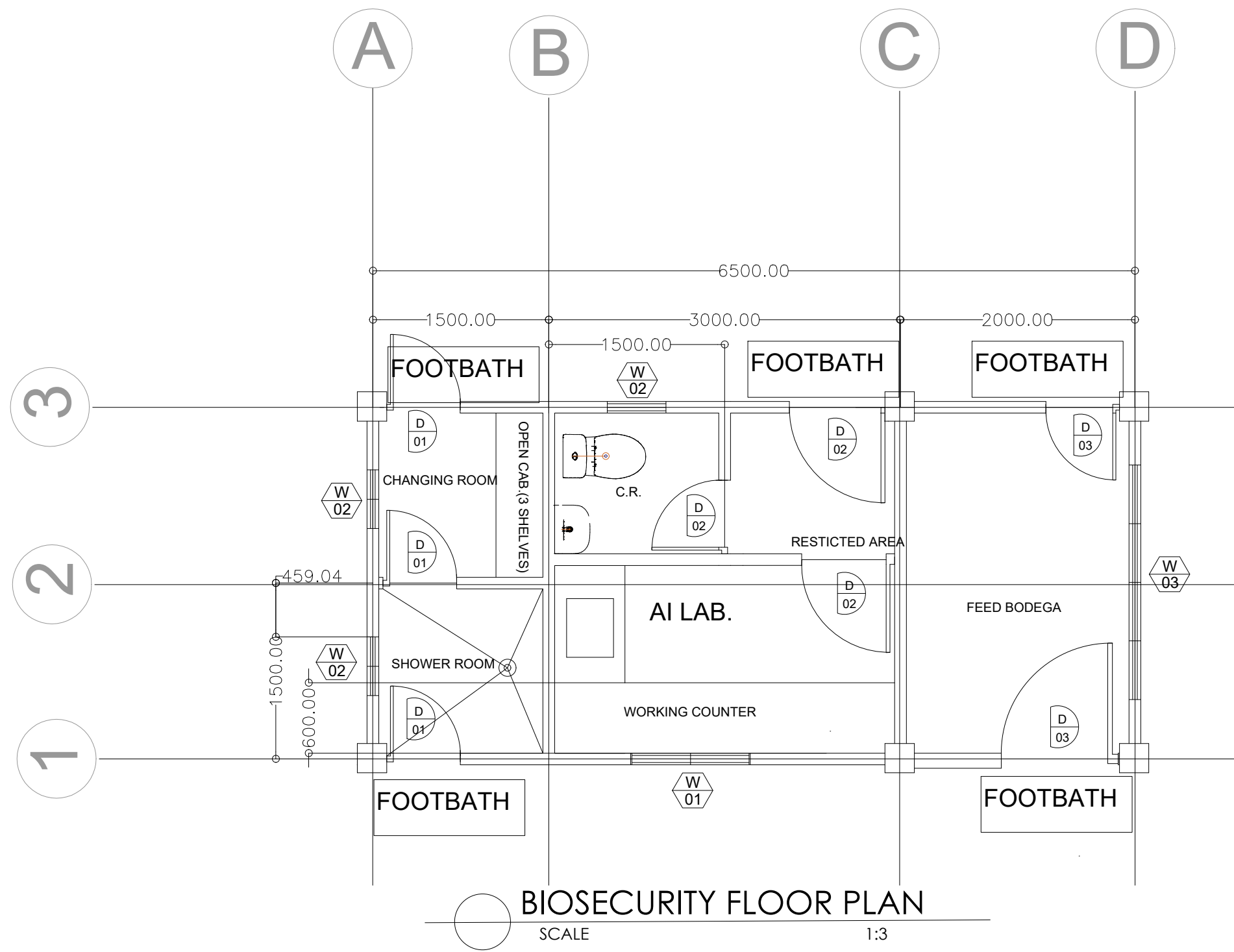


1 LONGITUDINAL VIEW SECTION
A-2 SCALE 15

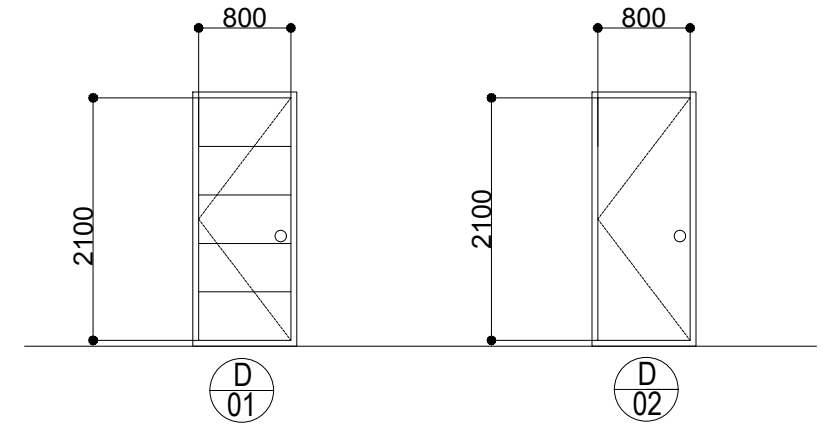
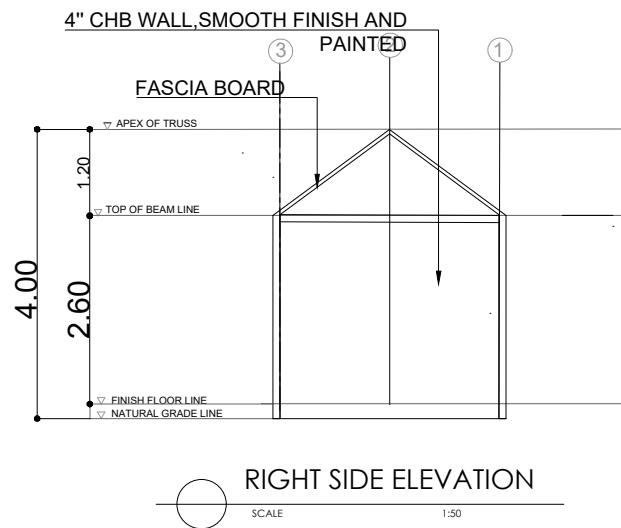
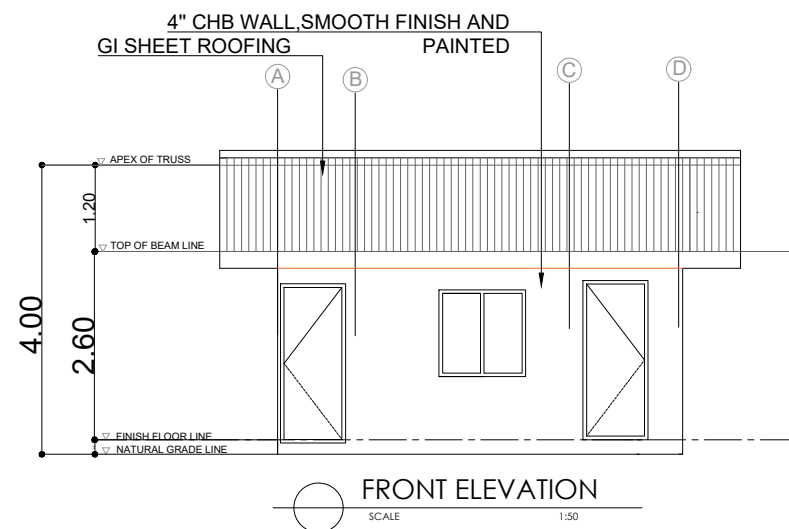
NOTES:

1. HEIGHT OF G.I. POST ON DUMMY SOW SHALL BE OF 120M AND SPACING SHALL BE OF 2.0M.
2. WALL CURTAIN SHALL BE OF CONTINUES AND INSTALLED AS ROLL DOWN.
3. CEILING SHALL BE OF 0.4mm THICK SPANDREL. HEIGHT FROM FINISH FLOOR LINE SHALL BE OF 2.40M.

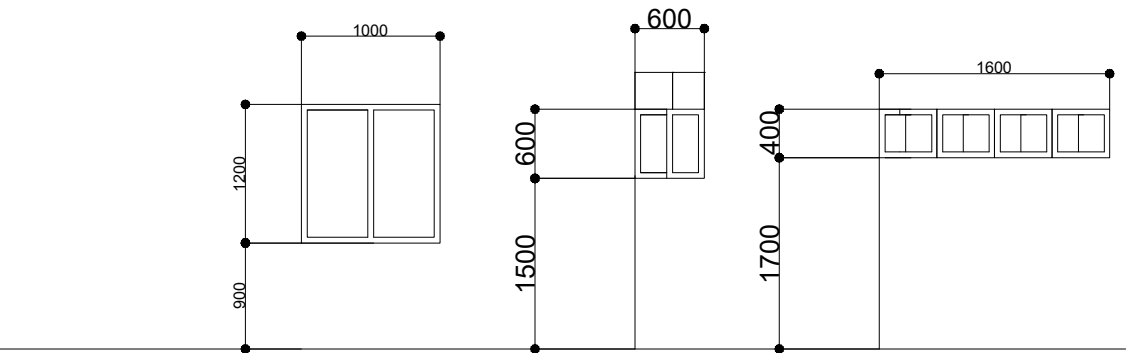
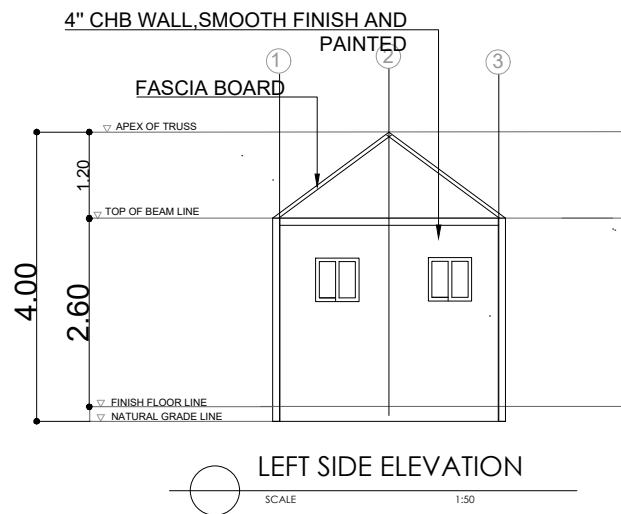
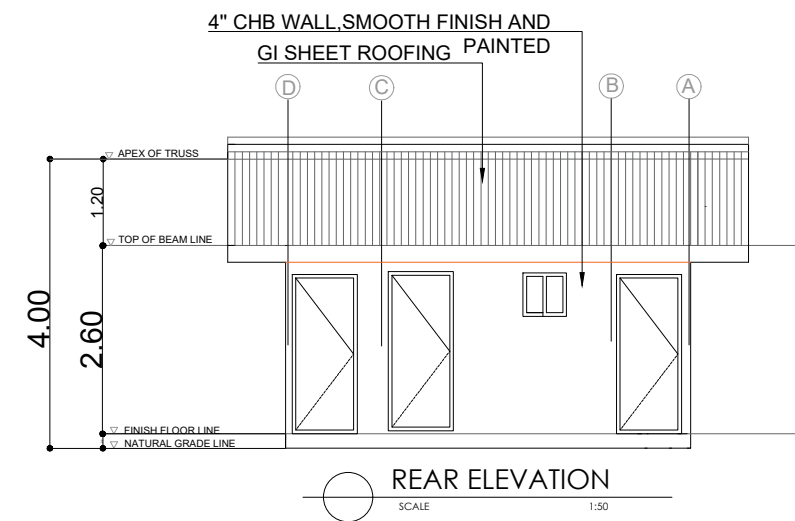
| | | | | | |
|--|--|--|--|---|--|
| CIVIL ENGINEER/ARCHITECT: PRC NO: _____ VALIDITY: _____ PTR NO: _____ DATE ISSUED: _____ DATE: _____ PLACE ISSUED: _____ | PROJECT TITLE : SWINE AI SA BARANGAY (SWAIB) PROJECT | APPROVED BY DR. RUTH MICLAT-SONACO | SHEET CONTENT: ARCHITECTURAL AS SHOWN | DRAFTED BY: CA CHECKED BY: RA DATE: REVISION NO: | SHEET NO: A2 2 2 |
| | LOCATION : BRGY. SAN RAMON, NSAN REMEGIO, ANTIQUE | PROGRAM DIRECTOR NATIONAL LIVESTOCK PROJECT | | | |



| | | | | | | |
|----------------------------|------------|--|------------------------|----------------|----------------|--|
| CIVIL ENGINEER/ ARCHITECT: | | PROJECT TITLE : | APPROVED BY | SHEET CONTENT: | DRAFTED BY: CA | SHEET NO: |
| | | SWINE AI SA BARANGAY (SWAIB) PROJECT | DR. RUTH MICLAT-SONACO | AS SHOWN | CHECKED BY: RA | <div style="border: 1px solid black; border-radius: 50%; width: 40px; height: 40px; display: flex; align-items: center; justify-content: center; margin: 0 auto;"> A 3 </div> |
| PRG. NO: | VALIDITY : | | | | DATE: | |
| PTR. NO: | TIN NO. : | LOCATION : PROJ. SAN RAMON, SAN REMEGIO, ANTIQUE | | | REVISION NO: | |
| DATE ISSUED: | | | | | | |
| PLACE ISSUED: | | | | | | |



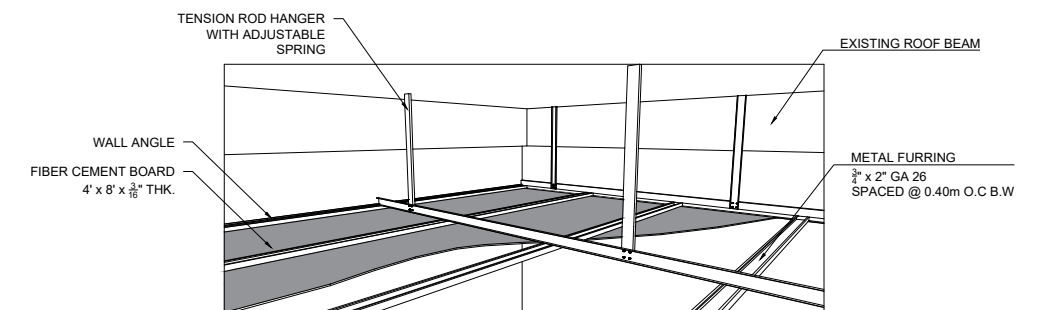
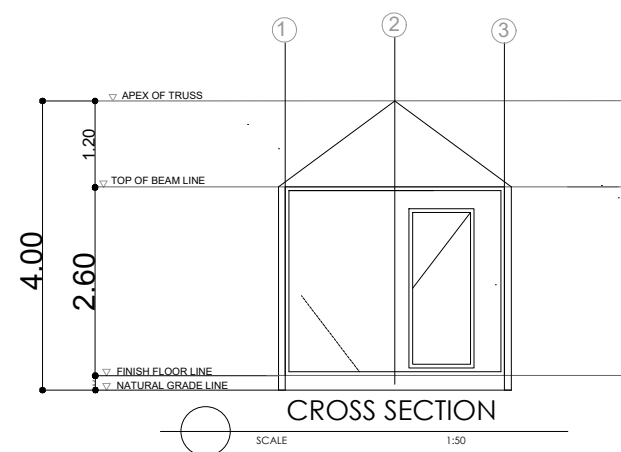
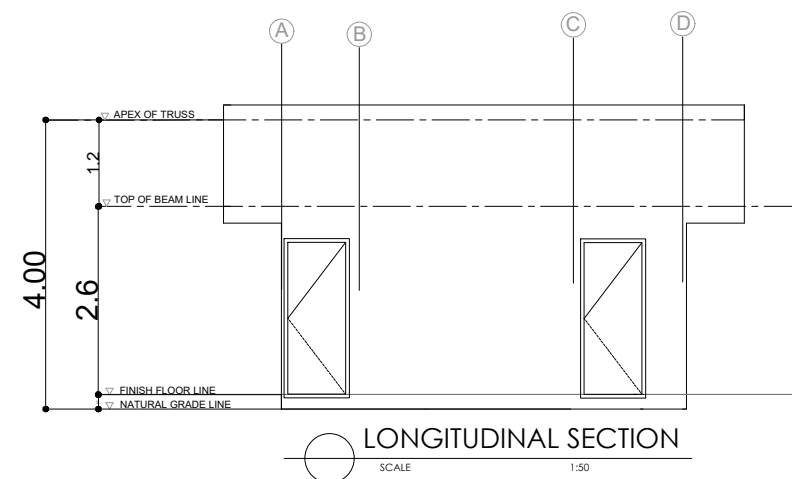
| | | |
|----------|------------|------------|
| PANEL | PANEL DOOR | PANEL DOOR |
| JAMB | MAHOGANY | MAHOGANY |
| REQUIRED | 3 - SETS | 3 - SETS |



| | | | |
|----------|---|--|---|
| PANEL | (W-1) SLIDING WINDOW USING 6MM THK. CLEAR GLASS (1 SET) | (W-2) SLIDING WINDOW USING 6MM THK. CLEAR GLASS (3 SETS) | (W-3) SLIDING WINDOW USING 6MM THK. CLEAR GLASS (1 SET) |
| FRAME | ALUMINUM | ALUMINUM | ALUMINUM |
| REQUIRED | 1 - SET | 1 - SET | 1 - SET |

SCHEDULE OF DOORS & WINDOWS

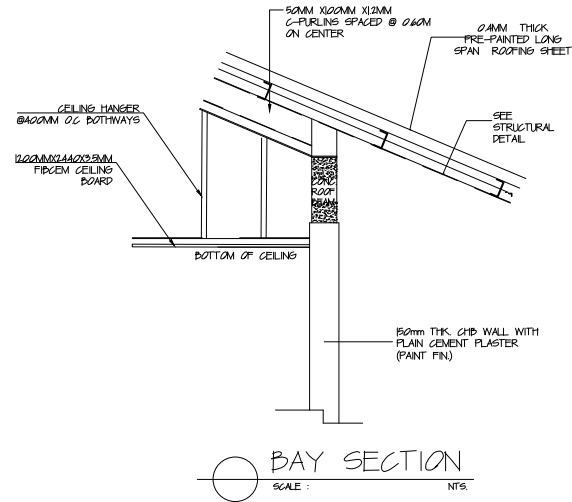
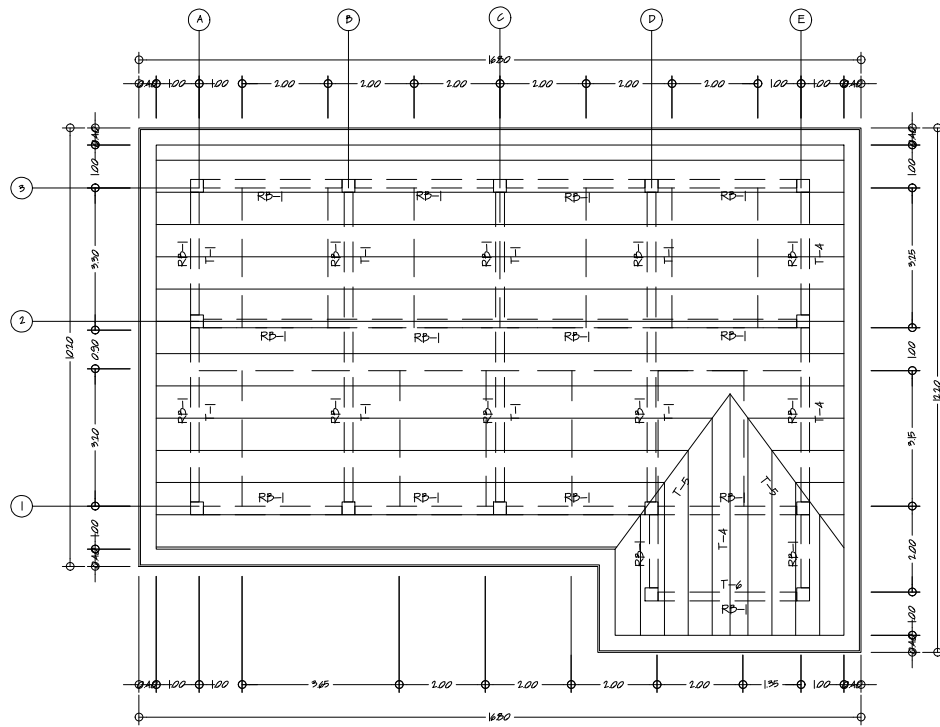
SCALE 1:50



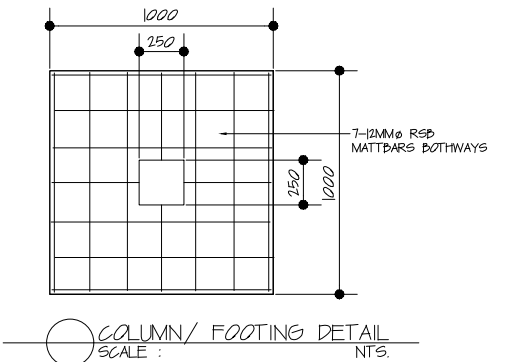
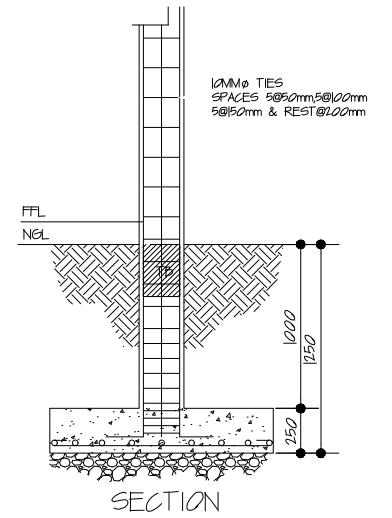
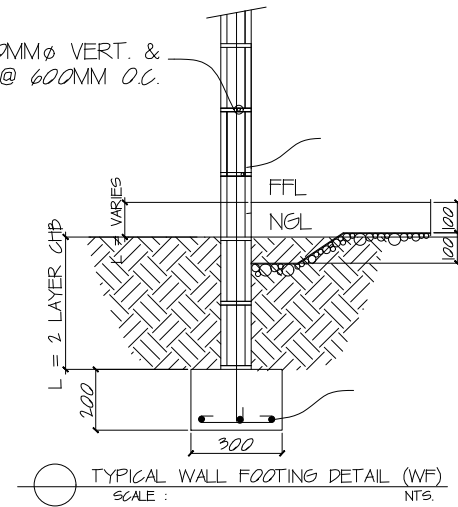
TYPICAL CEILING DETAIL

SCALE 1:50

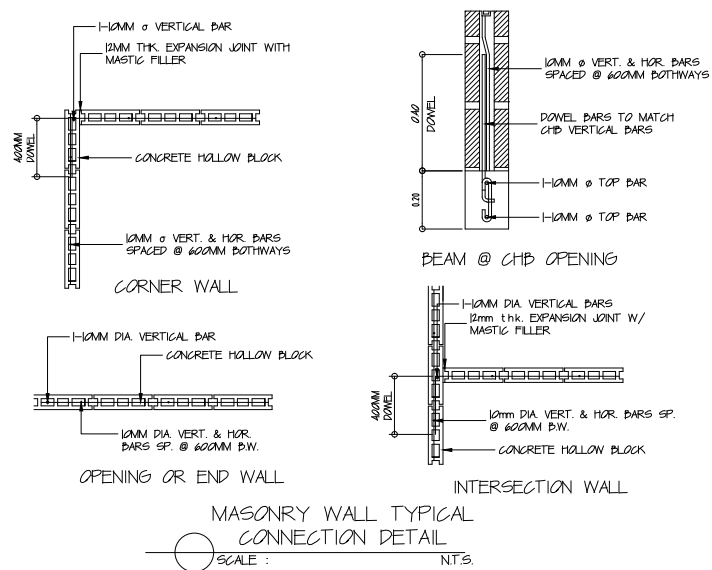
| | | | | | |
|---|---|--|----------------|----------------|-----------|
| CIVIL ENGINEER/ ARCHITECT: | PROJECT TITLE : | APPROVED BY | SHEET CONTENT: | DRAFTED BY: CA | SHEET NO. |
| | SWINE AI SA BARANGAY (SWAIB) PROJECT | DR. RUTH MICLAT-SONACO | AS SHOWN | CHECKED BY: RA | A 3 |
| PRJ. NO. : PTR. NO. : DATE ISSUED : PLACE ISSUED : | VALIDITY : TIN NO. : LOCATION : PRGY. SAN RAMON, SAN REMIGIO, ANTIQUE | PROGRAM DIRECTOR NATIONAL LIVESTOCK PROJECT | | DATE: | |
| | | | | REVISION NO.: | |



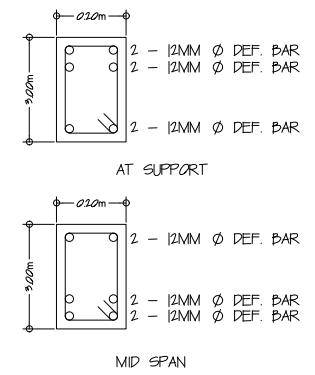
12MM CHB W/ 10MM Ø VERT. & HOR. BARS @ 600MM O.C.



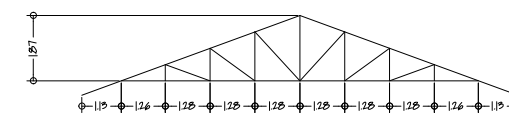
1 S-1 SCALE NTS
ROOF FRAMING PLAN



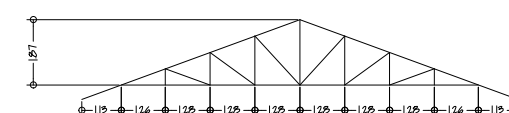
SCALE: NTS
MASONRY WALL TYPICAL CONNECTION DETAIL



1 S-1 SCALE NTS
ROOF BEAM DETAILS



1 S-1 SCALE NTS
TRUSS 1 & 5 DIAGRAM



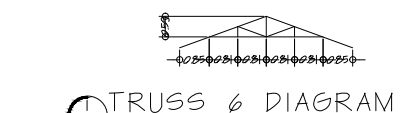
1 S-1 SCALE NTS
TRUSS 2 DIAGRAM



1 S-1 SCALE NTS
TRUSS 3 DIAGRAM

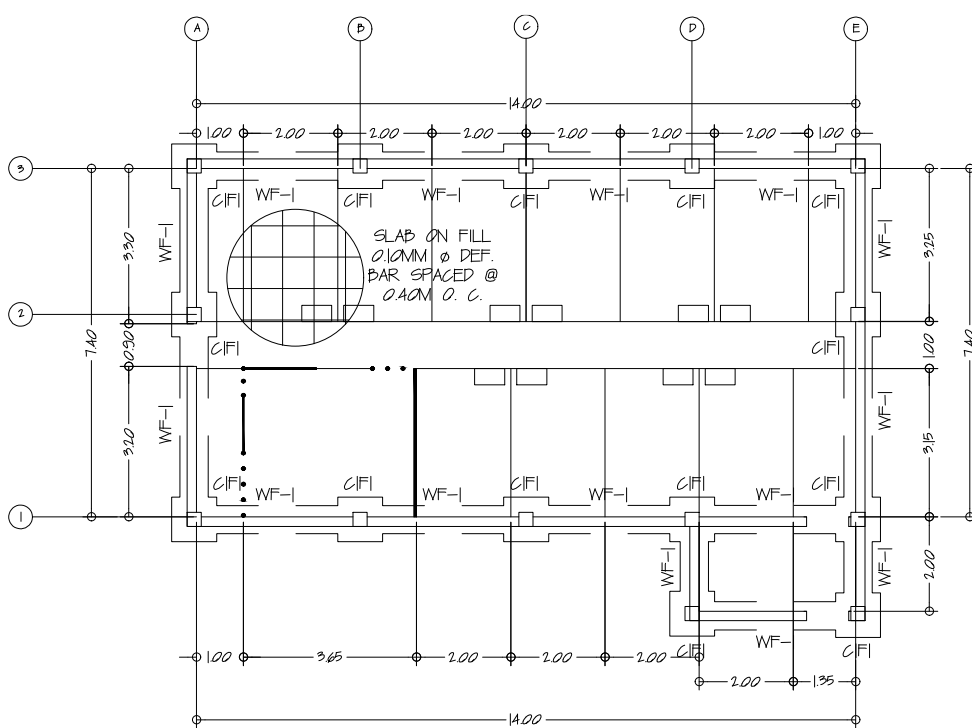


1 S-1 SCALE NTS
TRUSS 4 DIAGRAM

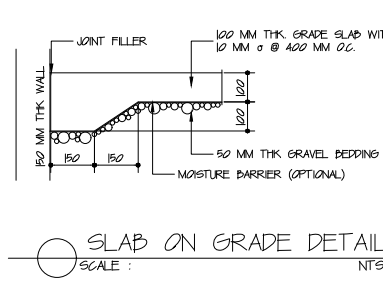


1 S-1 SCALE NTS
TRUSS 6 DIAGRAM

TOP BAR - 2" X 2" X 1/4" ANGULAR BAR
BOTTOM BAR - 2" X 2" X 1/4" ANGULAR BAR
MEMBERS - 1 1/2" X 1 1/2" X 1/4" ANGULAR BAR
PURLINS - 2" X 4" X 12MM GI PURLIN



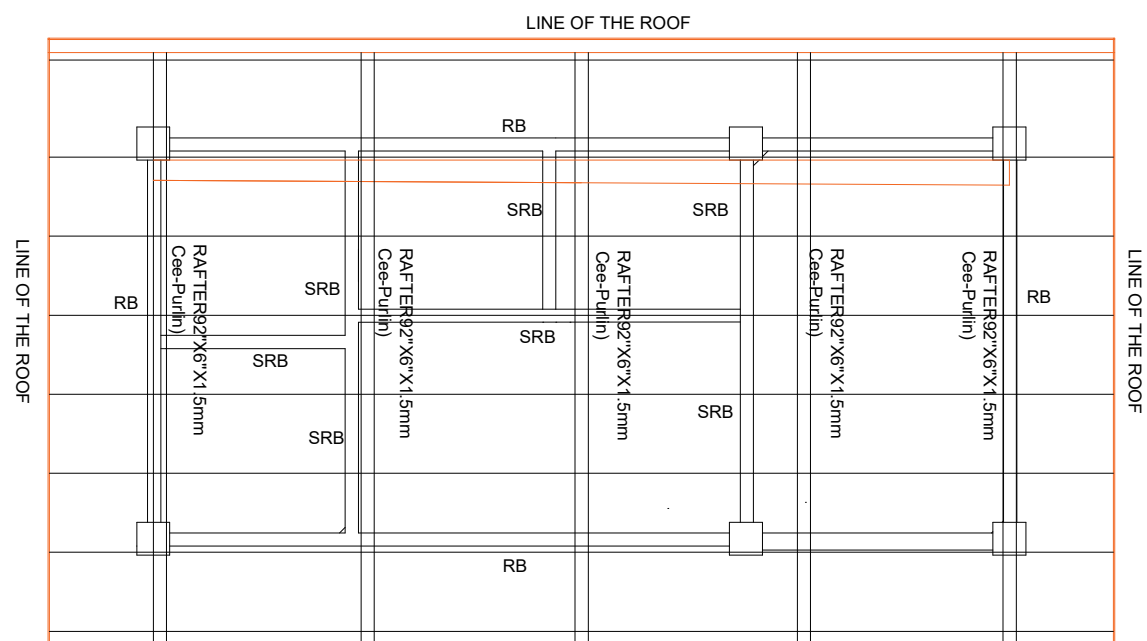
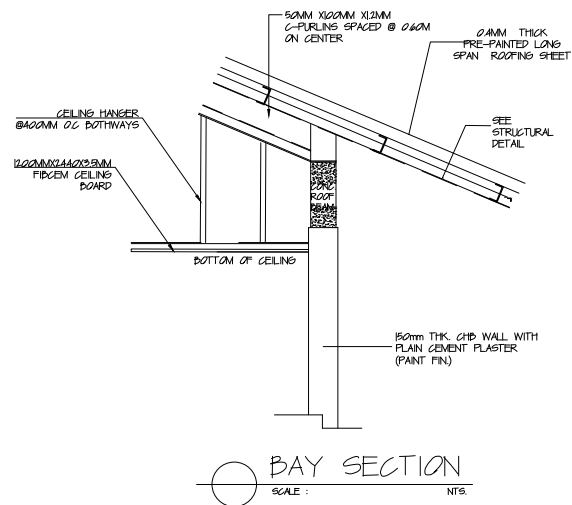
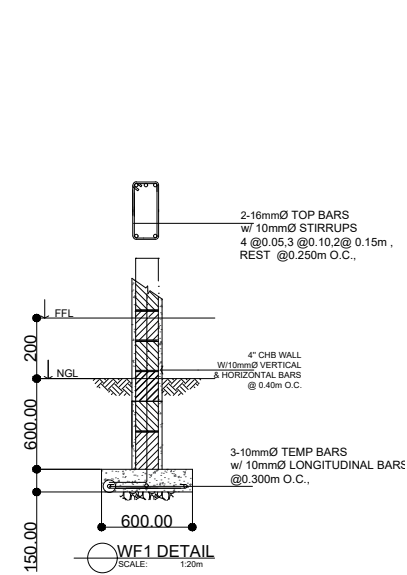
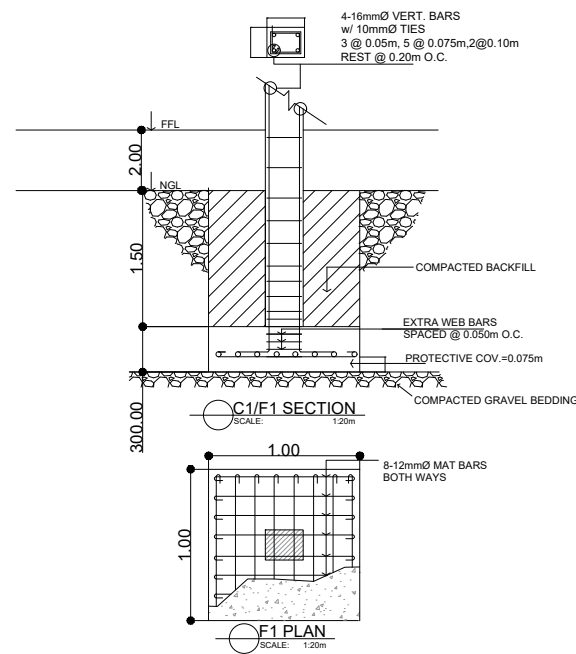
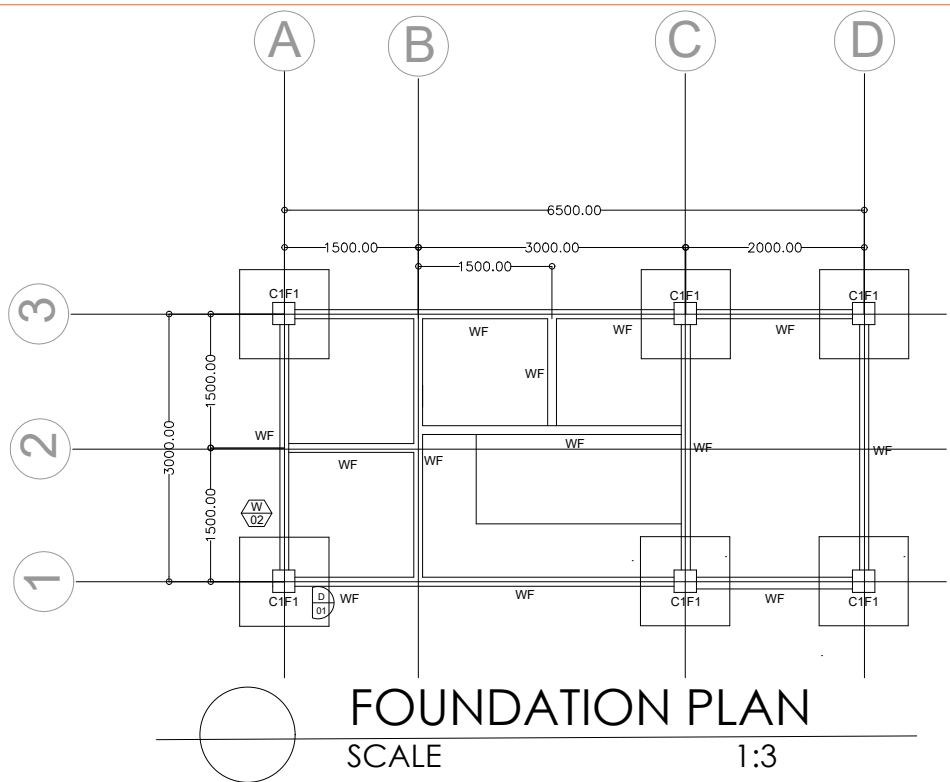
1 S-1 SCALE NTS
GROUND FLOOR FOUNDATION PLAN



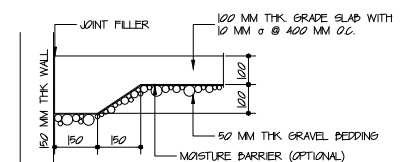
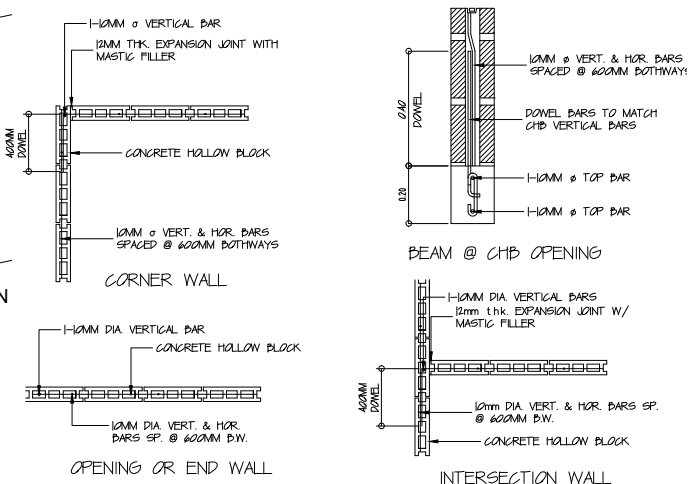
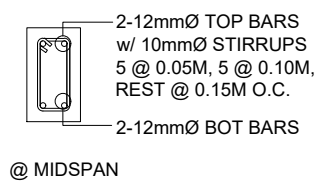
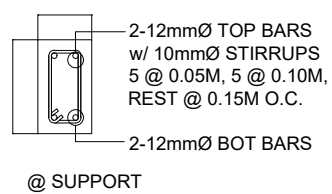
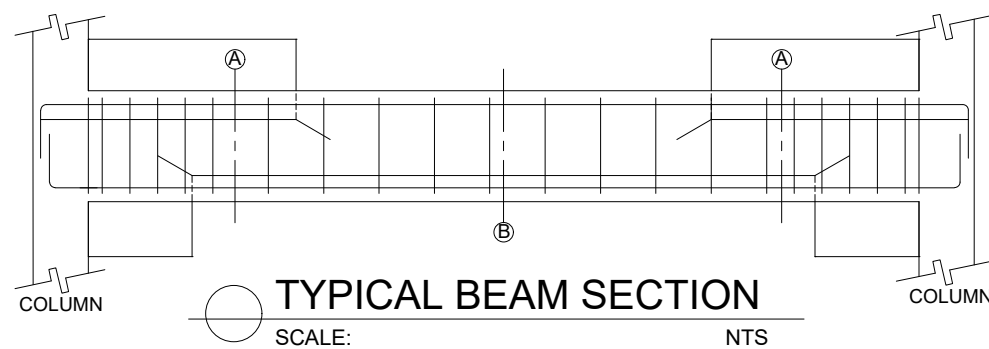
SCALE: NTS
SLAB ON GRADE DETAIL

| SCHEDULE OF FOOTING | | | | SCHEDULE OF COLUMN | | | |
|---------------------|--------------|-----------|----------------------|--------------------|-------------|-------------|------------------|
| MARK | SIZE A X B | THICKNESS | REBARS | MARK | SIZE L X W | REBARS | TIES |
| F-1 | 100 X 100 | 0.30 | 6 - 12 mm Ø BOTHWAYS | C-1 | 0.30 X 0.30 | 6 - 12 mm Ø | 10 mm Ø @ 0.10 m |
| WF | 0.40 X CONT. | 0.30 | 3 - 12 mm Ø BOTHWAYS | | | | |

| | | | | | |
|-----------------|--|----------------------------|---------------------------|----------------|-------------|
| CIVIL ENGINEER: | PROJECT TITLE : | APPROVED BY | SHEET CONTENT: STRUCTURAL | DRAFTED BY: CA | SHEET NO: |
| | SWINE AI SA BARANGAY (SWAIB) PROJECT | DR. RUTH MICLAT-SONACO | AS SHOWN | CHECKED BY: RA | S1 1 2 |
| PRC. NO.: | VALIDITY : | PROGRAM DIRECTOR | | DATE: | |
| PTR. NO.: | TIN NO. : | NATIONAL LIVESTOCK PROJECT | | REVISION NO.: | |
| DATE ISSUED: | LOCATION : PRGY. SAN RAMON, SAN REMEGIO, ANTIQUE | | | | |
| PLACE ISSUED: | | | | | |



NOTE:
USE 2"x4"x1.2mm C-CHANNEL(PURLINS)
USE 10mm Ø SAGROD

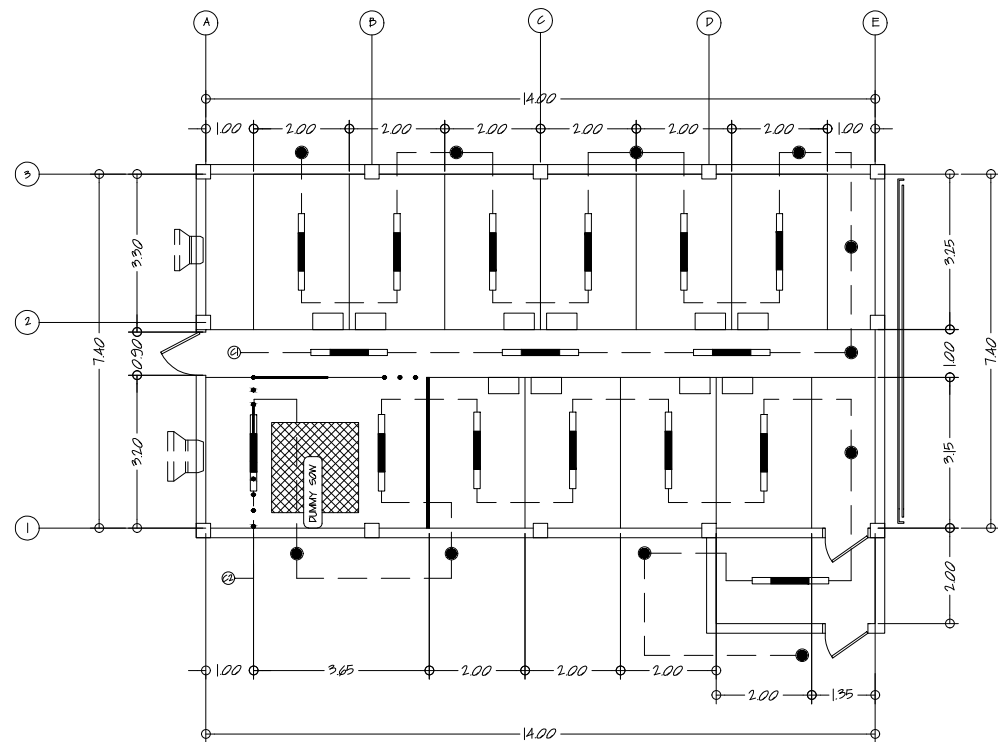


| | |
|-----------------|-----------|
| CIVIL ENGINEER: | |
| PRG. NO: | VALIDITY: |
| PTR. NO: | |
| DATE ISSUED: | TIN No.: |
| PLA/F 168 PD | |

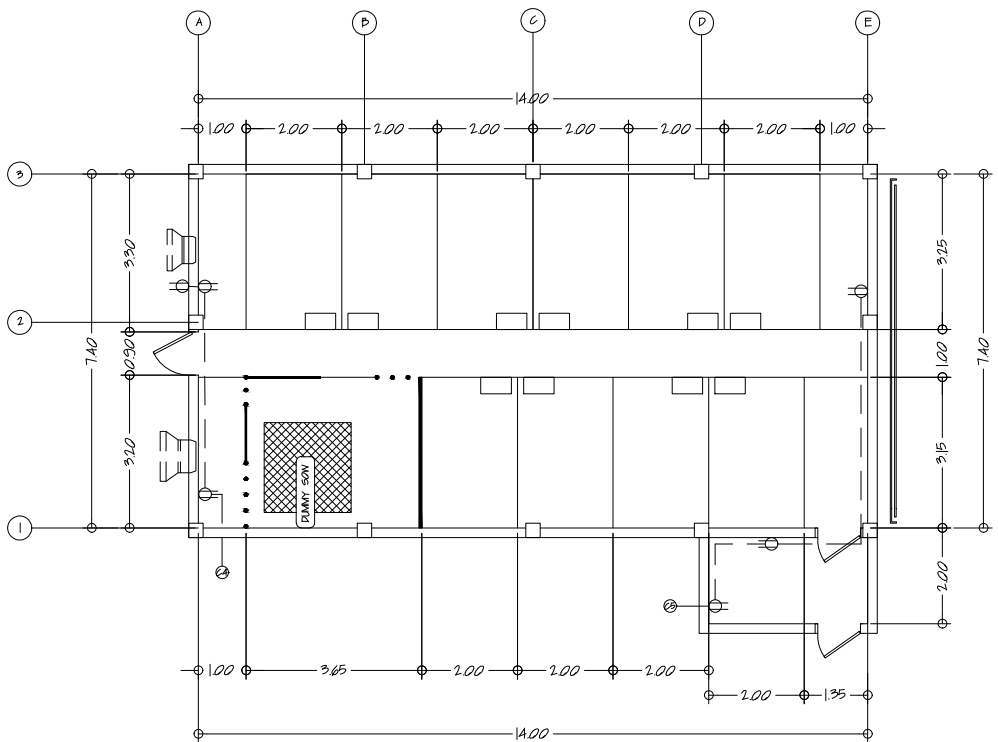
| | |
|--|--|
| PROJECT TITLE: | APPROVED BY: |
| SWINE AI SA BARANGAY (SWAIB) PROJECT | DR. RUTH MIGLAT-SONACO |
| LOCATION: BRGY. SAN RAMON, SAN RAMON, ANTIPOLO | PROGRAM DIRECTOR NATIONAL LIVESTOCK PROJECT |

| | | |
|---------------------------|----------------|-----------|
| SHEET CONTENT: STRUCTURAL | DRAFTED BY: CA | SHEET NO: |
| AS SHOWN | CHECKED BY: RA | 51 |
| | DATE: | 2 |
| | REVISION NO: | 2 |

| | |
|-----------|--|
| SHEET NO: | |
| 51 | |
| 2 | |
| 2 | |



1 GROUND FLOOR LIGHTING LAYOUT
E-1 SCALE 1:100



2 GROUND FLOOR CONVENIENCE LAYOUT
E-1 SCALE 1:100

3 SCHEDULE OF LOADS & CALCULATIONS

E-1 SCALE NTS

| CKT. NO. | LOAD DESCRIPTION | VOLTS | VA | LOAD | SIZE OF FEEDERS & RACEWAYS | OVERCURRENT PROTECTIVE DEVICE |
|----------|--------------------|-------|------|-------|---|-------------------------------|
| 1 | LIGHTING OUTLET | 230 | 240 | 1.04 | 2 - 35mm ² THHN/THWN + 1 - 20mm ² THHN/THWN (Ø) IN 20mm Ø PVC | 15 AT/100AF, 230V, 2P BOLT-ON |
| 2 | LIGHTING OUTLET | 230 | 170 | 0.74 | 2 - 35mm ² THHN/THWN + 1 - 20mm ² THHN/THWN (Ø) IN 20mm Ø PVC | 15 AT/100AF, 230V, 2P BOLT-ON |
| 3 | CONVENIENCE OUTLET | 230 | 540 | 2.35 | 2 - 35mm ² THHN/THWN + 1 - 20mm ² THHN/THWN (Ø) IN 20mm Ø PVC | 20 AT/100AF, 230V, 2P BOLT-ON |
| 4 | CONVENIENCE OUTLET | 230 | 540 | 2.35 | 2 - 35mm ² THHN/THWN + 1 - 20mm ² THHN/THWN (Ø) IN 20mm Ø PVC | 20 AT/100AF, 230V, 2P BOLT-ON |
| 5 | MOTOR LOAD | 230 | 2000 | 8.70 | 2 - 55mm ² THHN/THWN + 1 - 35mm ² THHN/THWN (Ø) IN 20mm Ø PVC | 30 AT/100AF, 230V, 2P BOLT-ON |
| 6 | MOTOR LOAD | 230 | 2000 | 8.70 | 2 - 55mm ² THHN/THWN + 1 - 35mm ² THHN/THWN (Ø) IN 20mm Ø PVC | 30 AT/100AF, 230V, 2P BOLT-ON |
| 7 | SPARE | 230 | 2000 | 8.70 | 2 - 55mm ² THHN/THWN + 1 - 35mm ² THHN/THWN (Ø) IN 20mm Ø PVC | 30 AT/100AF, 230V, 2P BOLT-ON |
| TOTAL | | | 7430 | 32.55 | 2 - 14mm ² THHN/THWN + 1 - 80mm ² THHN/THWN (Ø) IN 32mm Ø PVC | 60 AT/100AF, 230V, 2P BOLT-ON |

TOTAL CONNECTED LOAD: I = 32.55 A
 MAIN FEEDER SIZE: USE: 2 - 14mm² THHN/THWN + 1 - 80mm² THHN/THWN (Ø) IN 32mm Ø PVC
 MAIN OVERCURRENT PROTECTIVE DEVICE: USE: 60 AT/100AF, 230V, 2P BOLT-ON TYPE MAIN WITH GROUND LUGS

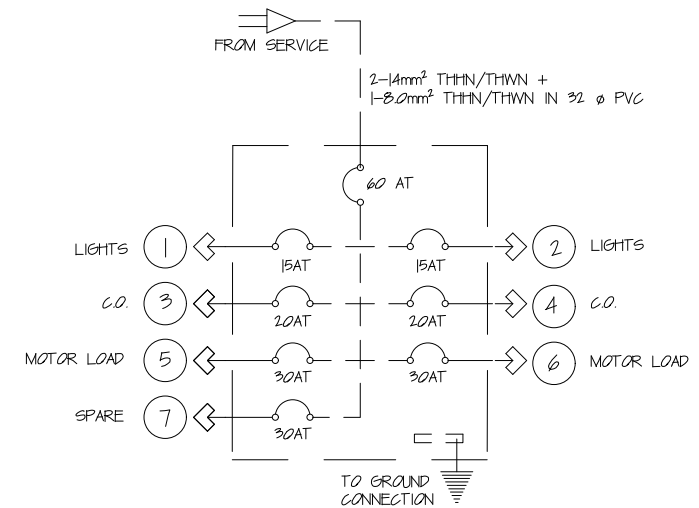
4 DESIGN ANALYSIS

E-1 SCALE

- C1 - LIGHTING OUTLET
 $240VA / 230 = 1.04 A$
 USE: 2 - 35mm² THHN/THWN + 1 - 20mm² THHN/THWN (Ø) IN 20mm Ø PVC
 15AT/100AF, 230V, 2P BOLT-ON
 - C2 - LIGHTING OUTLET
 $170VA / 230 = 0.74 A$
 USE: 2 - 35mm² THHN/THWN + 1 - 20mm² THHN/THWN (Ø) IN 20mm Ø PVC
 15AT/100AF, 230V, 2P BOLT-ON
 - C3 - CONVENIENCE OUTLET
 $540VA / 230 = 2.35 A$
 USE: 2 - 35mm² THHN/THWN + 1 - 20mm² THHN/THWN (Ø) IN 20mm Ø PVC
 20AT/100AF, 230V, 2P BOLT-ON
 - C4 - CONVENIENCE OUTLET
 $540VA / 230 = 2.35 A$
 USE: 2 - 35mm² THHN/THWN + 1 - 20mm² THHN/THWN (Ø) IN 20mm Ø PVC
 20AT/100AF, 230V, 2P BOLT-ON
 - C5 - MOTOR LOAD
 $2000VA / 230 = 8.70 A$
 USE: 2 - 55mm² THHN/THWN + 1 - 35mm² THHN/THWN (Ø) IN 20mm Ø PVC
 30AT/100AF, 230V, 2P BOLT-ON
 - C6 - MOTOR LOAD
 $2000VA / 230 = 8.70 A$
 USE: 2 - 55mm² THHN/THWN + 1 - 35mm² THHN/THWN (Ø) IN 20mm Ø PVC
 30AT/100AF, 230V, 2P BOLT-ON
 - C7 -
 $2000VA / 230 = 8.70 A$
 USE: 2 - 55mm² THHN/THWN + 1 - 35mm² THHN/THWN (Ø) IN 20mm Ø PVC
 30AT/100AF, 230V, 2P BOLT-ON
- TOTAL CONNECTED LOAD: I = 32.55 A
 MAIN FEEDER SIZE: 2 - 14mm² THHN/THWN + 1 - 80mm² THHN/THWN (Ø) IN 32mm Ø PVC
 MAIN OVERCURRENT PROTECTIVE DEVICE: 60AT/100AF, 230V, 2P BOLT-ON TYPE MAIN WITH GROUND LUGS

5 RISER DIAGRAM

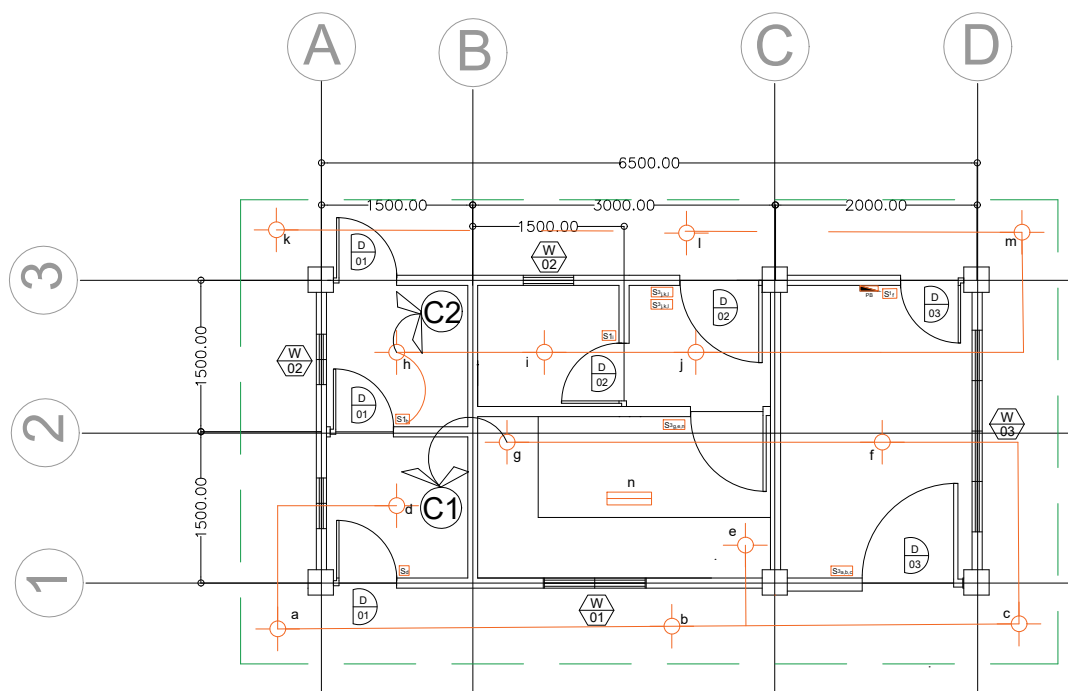
E-1 SCALE



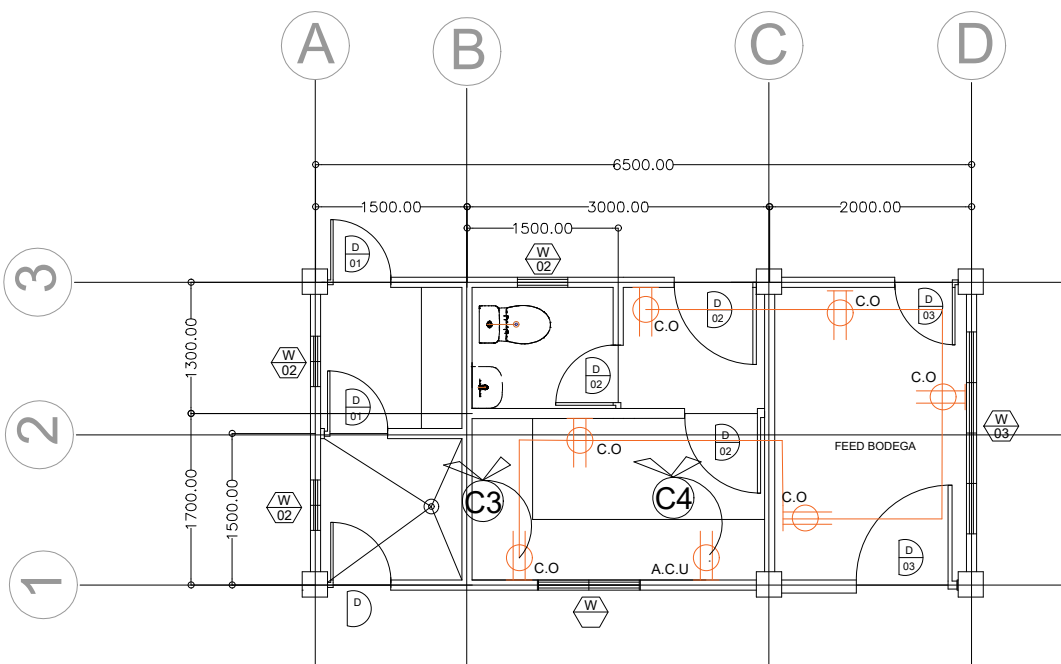
LEGEND & SYMBOLS

- 20W LED TROFFER TYPE COOLWHITE WITH LUMINAIRE
- 10 W LED CIRCULAR TYPE COOLWHITE WITH LUMINAIRE
- DUPLEX TYPE CONVENIENCE OUTLET

| | | | | | |
|---------------------------------------|--------------------------------------|-------------|---------------------------|----------------|----------------|
| ELECTRICAL ENGINEER: | PROJECT TITLE : | APPROVED BY | SHEET CONTENT: ELECTRICAL | DRAFTED BY: CA | SHEET NO: |
| | SWINE AI SA BARANGAY (SWAIB) PROJECT | | DR. RUTH MICLAT-SONAGO | AS SHOWN | CHECKED BY: RA |
| | | | | | |
| | PRG. NO. : VALIDITY : | | | | DATE: |
| PTR. NO. : DATE ISSUED: PLACE ISSUED: | TIN No. : | | | REVISION NO.: | |



LIGHTING LAY-OUT
SCALE 1:3



CONVENIENCE OUTLET LAY-OUT
SCALE 1:3

3 SCHEDULE OF LOADS & CALCULATIONS

E-I SCALE NTS

| CKT. NO. | LOAD DESCRIPTION | VOLTS | VA | LOAD | SIZE OF FEEDERS & RACEWAYS | OVERCURRENT PROTECTIVE DEVICE |
|----------|--------------------|-------|------|------|---|-------------------------------|
| 1 | LIGHTING OUTLET | 230 | 70 | 0.22 | 2 - 35mm ² THHN/THWN + 1 - 20mm ² THHN/THWN (G) IN 20mm φ PVC | 15 AT/100AF, 230V, 2P BOLT-ON |
| 2 | LIGHTING OUTLET | 230 | 100 | 0.43 | 2 - 35mm ² THHN/THWN + 1 - 20mm ² THHN/THWN (G) IN 20mm φ PVC | 15 AT/100AF, 230V, 2P BOLT-ON |
| 3 | CONVENIENCE OUTLET | 230 | 900 | 3.91 | 2 - 35mm ² THHN/THWN + 1 - 20mm ² THHN/THWN (G) IN 20mm φ PVC | 20 AT/100AF, 230V, 2P BOLT-ON |
| 4 | CONVENIENCE OUTLET | 230 | 720 | 3.13 | 2 - 35mm ² THHN/THWN + 1 - 20mm ² THHN/THWN (G) IN 20mm φ PVC | 20 AT/100AF, 230V, 2P BOLT-ON |
| TOTAL | | | 1750 | 7.61 | 2 - 80mm ² THHN/THWN + 1 - 55mm ² THHN/THWN (G) IN 25mm φ PVC | 40 AT/100AF, 230V, 2P BOLT-ON |

TOTAL CONNECTED LOAD: I = 7.61 A
 MAIN FEEDER SIZE: USE: 2 - 80mm² THHN/THWN + 1 - 55mm² THHN/THWN (G) IN 25mm φ PVC
 MAIN OVERCURRENT PROTECTIVE DEVICE: USE: 40 AT/100AF, 230V, 2P BOLT-ON TYPE MAIN WITH GROUND LUGS

4 DESIGN ANALYSIS

E-I

C1 - LIGHTING OUTLET
 $70VA / 230 = 0.30 A$
 USE: 2 - 35mm² THHN/THWN + 1 - 20mm² THHN/THWN (G) IN 20mm φ PVC
 15AT/100AF, 230V, 2P BOLT-ON

C2 - LIGHTING OUTLET
 $40 / 230 = 0.17 A$
 $60VA / 230 = 0.26 A$
 USE: 2 - 35mm² THHN/THWN + 1 - 20mm² THHN/THWN (G) IN 20mm φ PVC
 15AT/100AF, 230V, 2P BOLT-ON

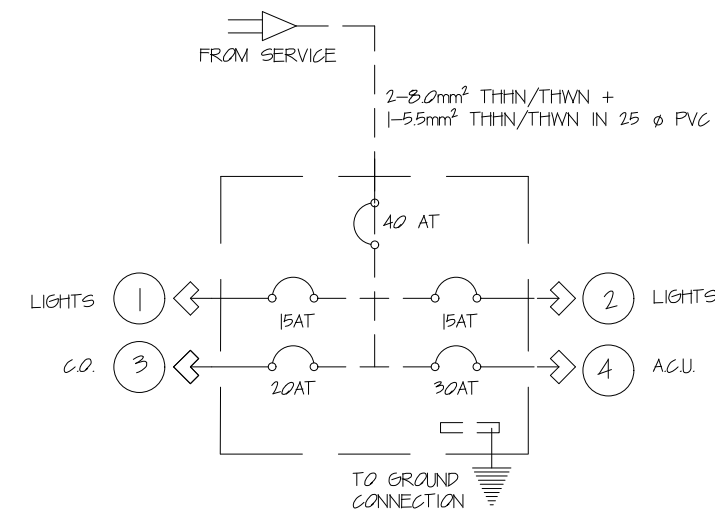
C3 - CONVENIENCE OUTLETPS
 $1200VA / 230 = 5.22 A$
 USE: 2 - 35mm² THHN/THWN + 1 - 20mm² THHN/THWN (G) IN 20mm φ PVC
 20AT/100AF, 230V, 2P BOLT-ON

C4 - AIRCONDITIONING UNIT OUTLET
 $1500VA / 230 = 6.52 A$
 USE: 2 - 35mm² THHN/THWN + 1 - 20mm² THHN/THWN (G) IN 20mm φ PVC
 30AT/100AF, 230V, 2P BOLT-ON

TOTAL CONNECTED LOAD: I = 7.61 A
 MAIN FEEDER SIZE: 2 - 80mm² THHN/THWN + 1 - 55mm² THHN/THWN (G) IN 25mm φ PVC
 40AT/100AF, 230V, 2P BOLT-ON TYPE MAIN WITH GROUND LUGS

5 RISER DIAGRAM

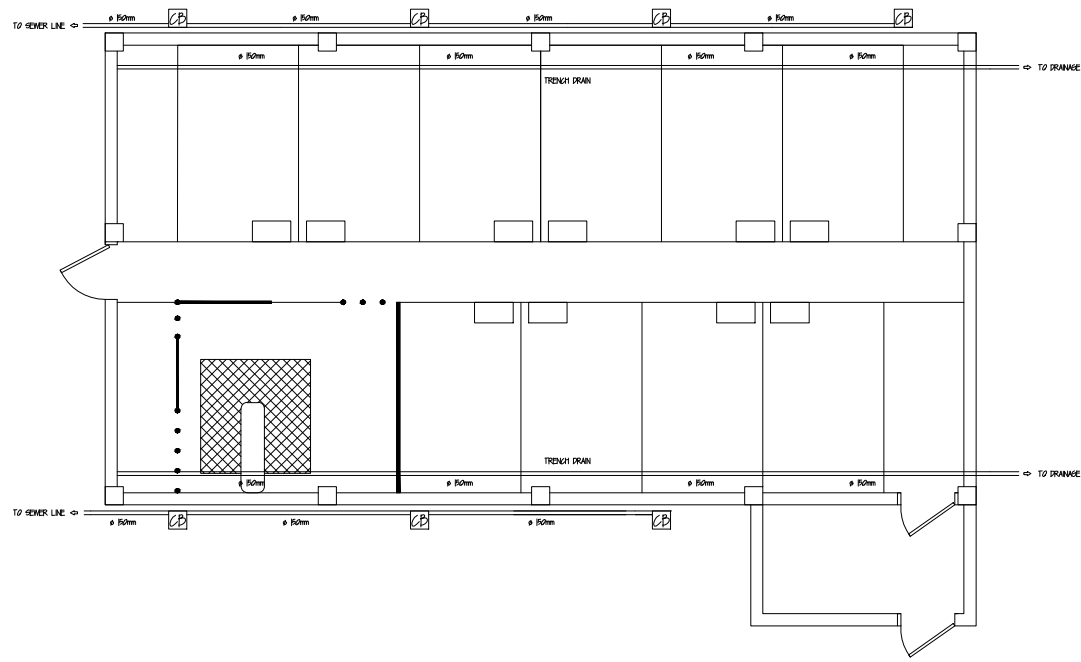
E-I



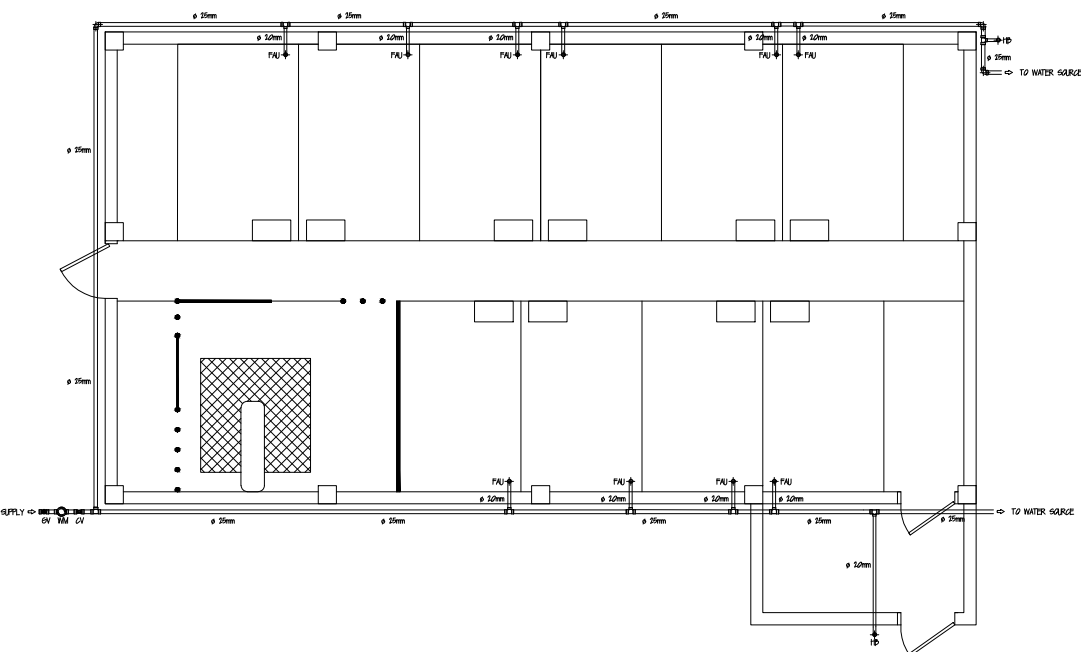
LEGEND & SYMBOLS

- 20W LED TROFFER TYPE COOLWHITE WITH LUMINAIRE
- 10 W LED CIRCULAR TYPE COOLWHITE WITH LUMINAIRE
- DUPLEX TYPE CONVENIENCE OUTLET
- PANEL BOARD

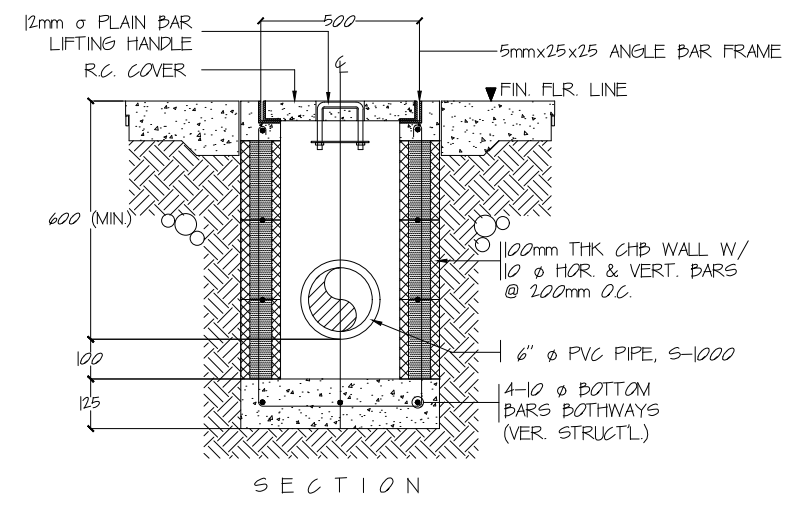
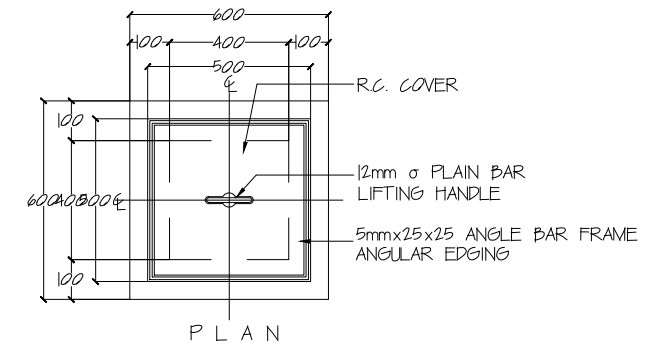
| | | | | | | | | | | | |
|----------------------|--|--|--|----------------------------|--|---------------------------|--|----------------|--|--------------|--|
| ELECTRICAL ENGINEER: | | PROJECT TITLE : | | APPROVED BY | | SHEET CONTENT: ELECTRICAL | | DRAFTED BY: CA | | SHEET NO: | |
| | | SWINE AI SA BARANGAY (SWAIB) PROJECT | | DR. RUTH MIGLAT-SONAGO | | AS SHOWN | | CHECKED BY: RA | | E-I 2 2 | |
| PRG. NO.: | | VALIDITY : | | PROGRAM DIRECTOR | | | | DATE: | | | |
| PTR. NO.: | | TIN No. : | | NATIONAL LIVESTOCK PROJECT | | | | REVISION NO.: | | | |
| DATE ISSUED: | | | | | | | | | | | |
| PLACE ISSUED: | | | | | | | | | | | |
| | | LOCATION : BRGY. SAN RAMON, SAN REMEGIO, ANTIQUE | | | | | | | | | |



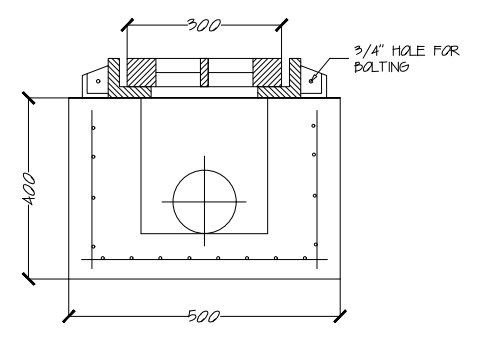
1 GROUND FLOOR WATER LINE LAYOUT
 P-1 SCALE 1:100



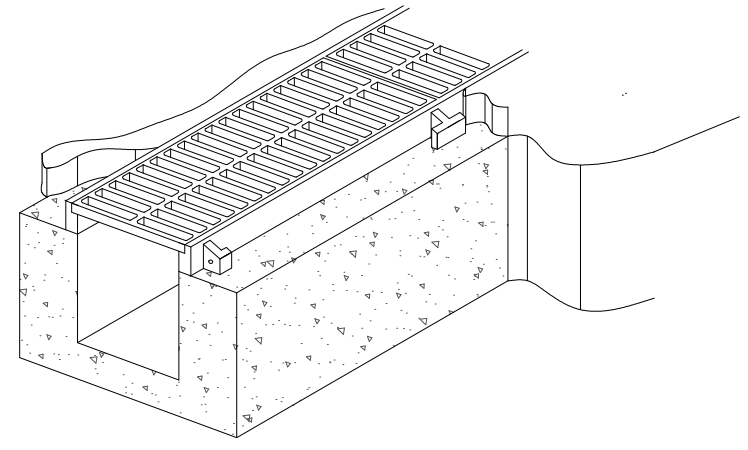
2 GROUND FLOOR PLUMBING LAYOUT
 P-1 SCALE 1:100



3 CATCH BASIN DETAIL
 P-1 SCALE: NTS



4 TRENCH DRAIN DETAIL
 P-1 SCALE: NTS



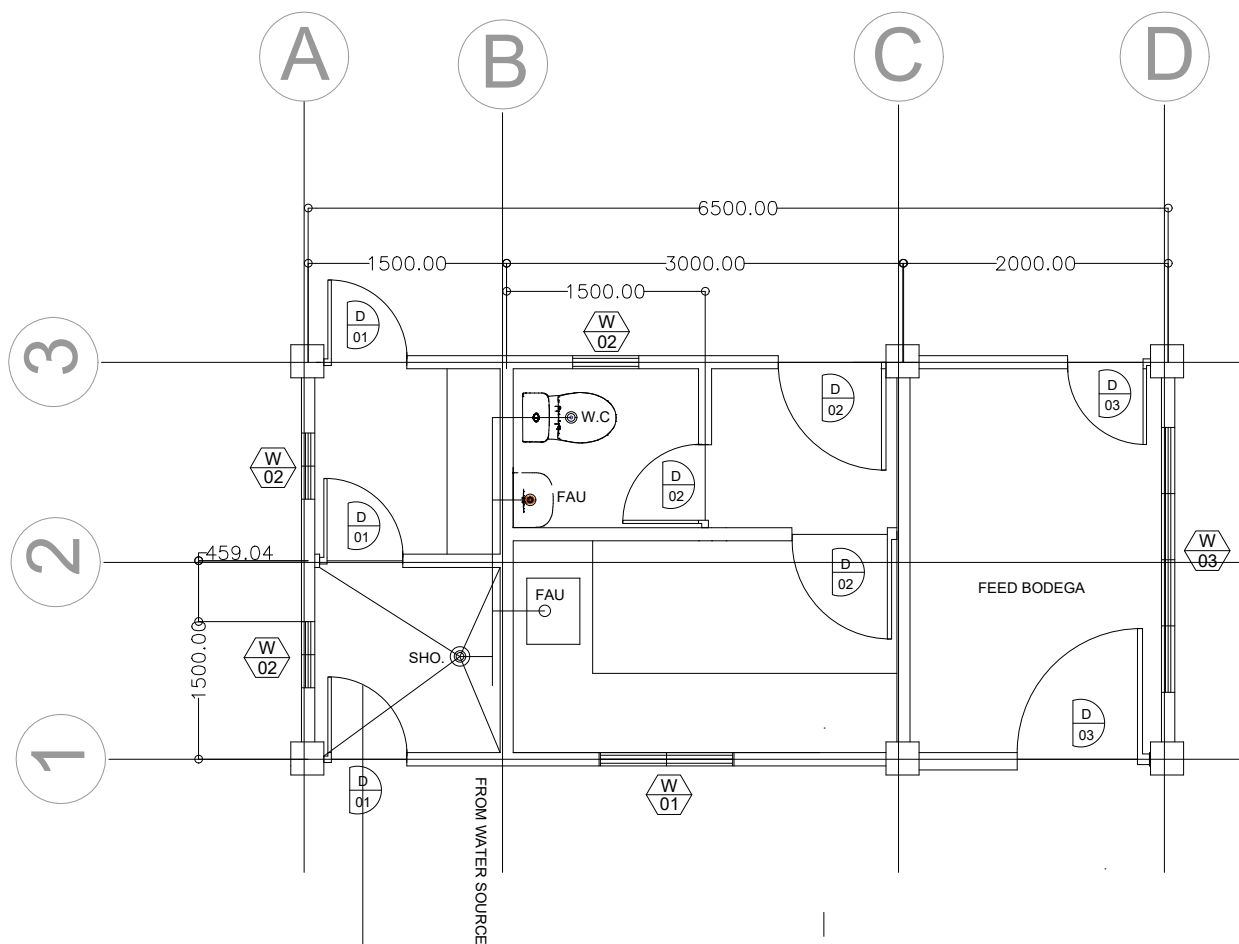
LEGEND:

- CV CHECK VALVE
- CB CATCH BASIN
- WM WATER METER
- GV GATE VALVE
- F FAUCET
- HD HOSE BIBB

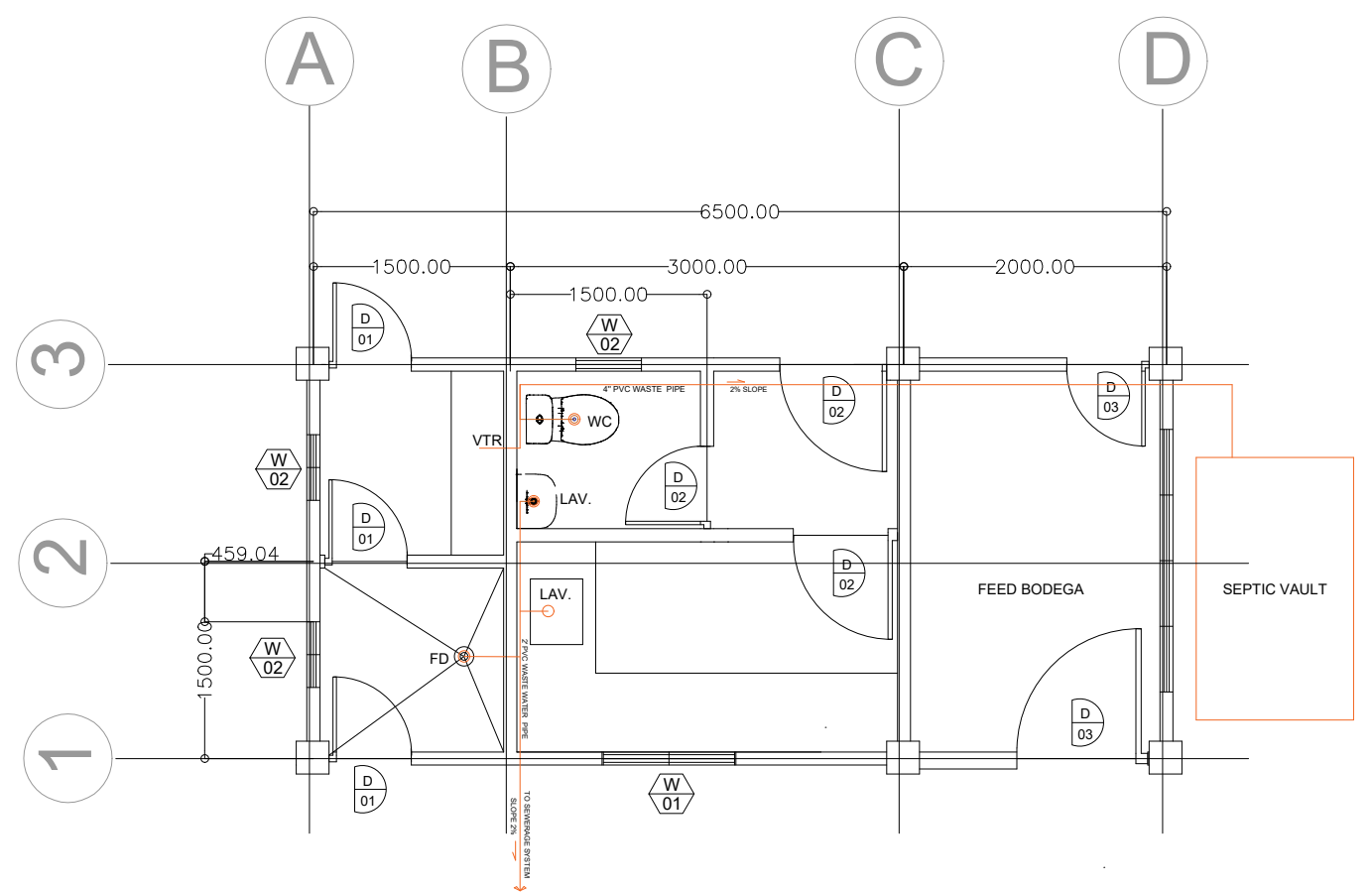
GENERAL SPECIFICATION

1. ALL WORKS SHALL CONFORM TO THE LATEST EDITION OF THE PHILIPPINE NATIONAL PLUMBING CODE, NATIONAL BUILDING CODE, CITY AND MUNICIPAL ORDINANCES AND APPROVED PLAN FOR CONSTRUCTION.
2. ALL SEWER, VENT & WATER LINES SHALL BE PROVIDED WITH ADEQUATE PIPE HANGERS.
3. PROVIDE WATER METER PROVISION AT AREA ACCESSIBLE FOR READING.
4. ALL HORIZONTAL PIPINGS SHALL RUN IN PRACTICAL ALIGNMENT AND AT UNIFORM GRADE NOT LESS THAN 2% AND SHALL BE SUPPORTED OR ANCHORAGE AT INTERNAL NOT TO EXCEED TO 3.0 M.
5. BEFORE PERFORMING ANY WORKS, CONTRACTOR SHALL THOROUGHLY EXAMINE ALL EXISTING CONDITIONS, POINTS OF CONNECTIONS, DEPTH, SIZES, ETC.
6. DRAWING ARE DIAGRAMATIC AND DO NOT SHOW ALL OFFSETS, BEND, ETC. WHICH MAY REQUIRE PROPER INSTALLATIONS OF SUCH WORKS SHALL PROVIDED WITH BENDS & OFFSETS AND NECESSARY VERIFIED AT BUILDING SITE.
7. THE WORKS THROUGH OUT SHALL BE EXECUTED IN THE BEST AND MOST THROUGH MANNERS KNOWN TO TRADE AND TO THE SATISFACTION OF THE ARCHITECT OR ENGINEER.
8. THE CONTRACTOR SHALL BE RESPONSIBLE FOR ALL REQUIRED WALLS AND FLOORS OPENINGS.
9. ALL FIXTURES SHALL BE VENTED UNLESS OTHERWISE INDICATED.
10. ALL PIPES AND FITTINGS MUST BE OF GOOD QUALITY AND SERVICE WEIGHTS.
11. CONSTRUCTION OF SEPTIC TANK MUST CONFORM WITH SECTION 233 OF NATIONAL PLUMBING CODE.

| | | | | | |
|----------------------------|--------------------------------------|------------------------|-------------------------|----------------|-----------|
| REGISTERED MASTER PLUMBER: | PROJECT TITLE : | APPROVED BY | SHEET CONTENT: PLUMBING | DRAFTED BY: CA | SHEET NO: |
| | SWINE AI SA BARANGAY (SWAIB) PROJECT | DR. RUTH MICLAT-SONACO | AS SHOWN | CHECKED BY: RA | PI |
| PRG. NO: | VALIDITY : | | | DATE: | |
| PTP. NO: | | | | REVISION NO: | |

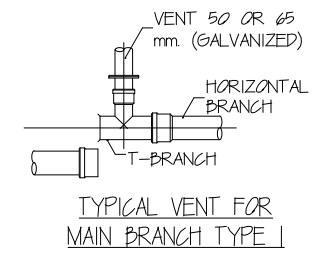
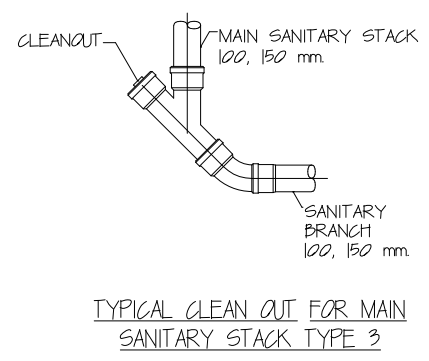
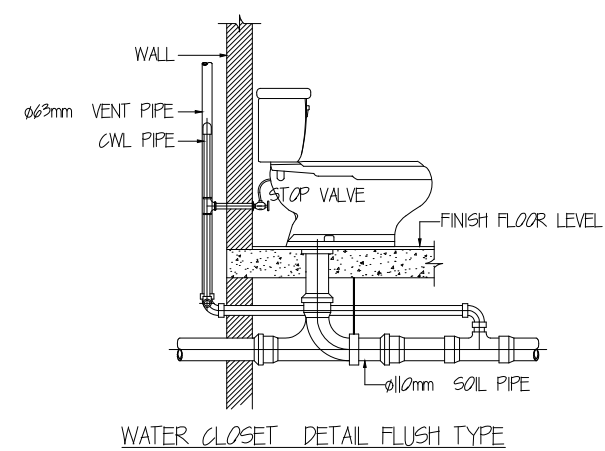
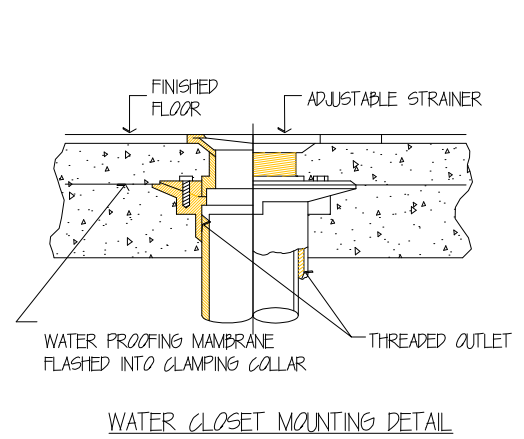


WATER DISTRIBUTION LAY-OUT
SCALE 1:3



SANITARY LAY-OUT
SCALE 1:3

MISCELLANEOUS DETAILS
SCALE NTS



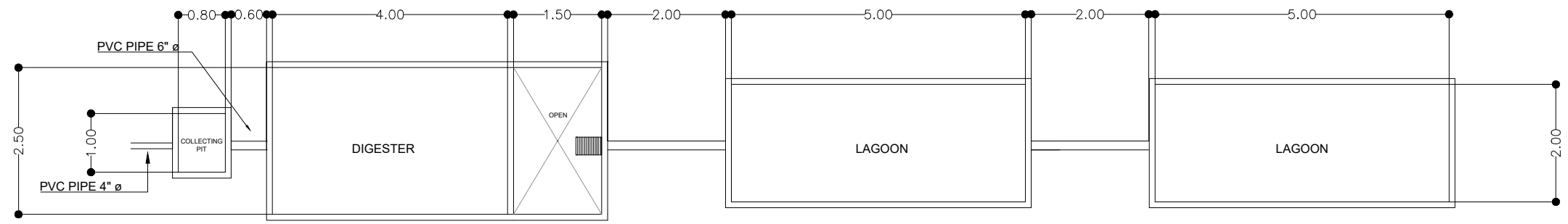
GENERAL PLUMBING NOTES AND SPECIFICATION

- ALL PLUMBING WORKS SHALL CONFORM WITH THE PROVISIONS OF RA1978, (NATIONAL PLUMBING CODE OF THE PHILIPPINES, 1999) AND THE RULES AND REGULATIONS OF THE LOCAL HEALTH ORDINANCES.
- ALL PLUMBING PIPES & FITTINGS, WASTE PIPES - MOLDEX SANIWAID EXTRA; WATER SUPPLY PIPES, MOLDEX BLUE PIPES, GATE VALVES & CHECK VALVES - CRANE; FIXTURES & ACCESSORIES - AMERICAN STANDARD; LEADER/DOWNSPOUT - PVC S1000 PIPES; FREE FROM ALL DEFECTS & DEFORMITIES.
- ALL HORIZONTAL WASTE/ DRAIN PIPES HAVING A DIAMETERS OF 100mm OR LESS SHALL HAVE A MINIMUM GRADE OF 2% PIPES OF DIAMETER LARGER THAN 100mm, A MINIMUM GRADE OF 1%.
- ALL PLUMBING PIPES, HORIZONTAL OR STACK ABOVE GRADE, SHALL BE PROVIDED WITH HANGERS, SUPPORTS AND / OR BRACKETS AS DIRECTED / APPROVED BY THE ENGINEER.
- NO PLUMBING PIPE SHALL BE EMBEDDED IN THE STRUCTURAL MEMBERS, SUCH AS BEAMS, COLUMN OR SLABS ABOVE GRADE, EXCEPT AS SHOWN DRAWINGS AND/OR BY THE ENGINEER. PROVIDE SLEEVES OF GI PIPE SIZED TO HAVE CLEARANCE AROUND THE PLUMBING PIPE PASSING THROUGH MASONRY WALLS, FLOORS OR ROOF SLABS, WITH NON COMBUSTIBLE MATERIAL.
- ALL VENT-THRU-ROOF PIPES SHALL CLEAR ROOFING AT LEAST 300mm.
- SEPTIC VAULT SHALL BE CONSTRUCTED WATER TIGHT AND LOCATED AT A SAFE DISTANCE FROM AN EXISTING WATER SUPPLY WELL AS PER PROVISIONS OF RA1978.
- OUTFLOW FROM THE SEPTIC VAULT SHALL BE DISCHARGED DIRECTLY TO THE STREET DRAINAGE. DRAIN PIPES & CATCH BASIN DISCHARGING OUTFLOW FROM THE SEPTIC VAULT SHALL ALSO BE CONSTRUCTED WATERTIGHT/WATERPROOFED TO PREVENT LEAKAGE TO PERCOLATE TO THE GROUND.
- WHenever, POTABLE WATER REQUIREMENT FOR A BUILDING USED FOR HUMAN HABITATION SHALL BE SUPPLIED FROM EXISTING MUNICIPAL OR CITY WATERWORKS SYSTEM (SECTION 302, CHAPTER 3, NATIONAL BUILDING CODE OF THE PHILIPPINES PD1096).
- ALL PLUMBING WORKS SHALL BE DONE BY EXPERIENCED PLUMBERS & JOURNEYMEN UNDER THE DIRECT SUPERVISION OF A FULLY REGISTERED MASTER PLUMBER.

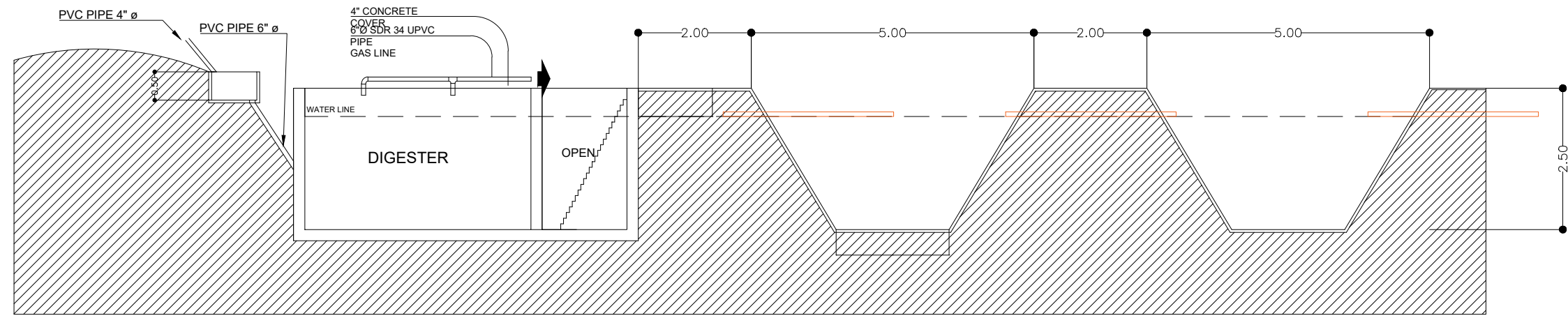
LEGEND & SYMBOLS:

- GO CLEAN OUT
- FGO FLOOR CLEAN OUT
- WG WATER CLOSET
- KS KITCHEN SINK
- LAV LAVATORY
- WM WATER METER
- CV CHECK VALVE
- GV GATE VALVE
- EDB ELBOW TURNED DOWN
- EDU ELBOW TURNED UP
- CO CLEAN OUT

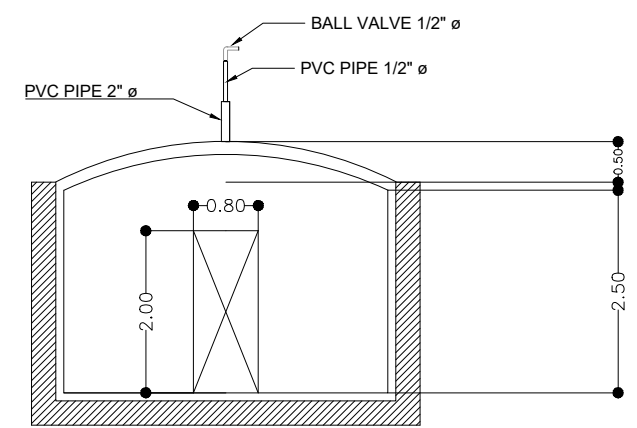
| | | | | | |
|----------------------------|--|--|-------------------------|----------------|-----------|
| REGISTERED MASTER PLUMBER: | PROJECT TITLE : | APPROVED BY | SHEET CONTENT: PLUMBING | DRAFTED BY: CA | SHEET NO: |
| | SWINE AI SA BARANGAY (SWAIB) PROJECT | DR. RUTH MICLAT-SONACO | AS SHOWN | CHECKED BY: RA | PI 3 |
| PRG. NO: VALIDITY : | LOCATION : BRGY. SAN RAMON, SAN REMEGIO, ANTIQUE | PROGRAM DIRECTOR NATIONAL LIVESTOCK PROJECT | | DATE: | |
| P.T.R. NO: DATE : | | | | REVISION NO.: | |



PLAN/LAYOUT
SCALE 1:50



LONGITUDINAL SECTION
SCALE 1:50



DIGESTER ELEVATION
SCALE 1:50 MTS

| | | | | | |
|----------------------------------|---|----------------------------|-------------------------|----------------|-----------|
| REGISTERED MASTER PLUMBER: | PROJECT TITLE : | APPROVED BY | SHEET CONTENT: PLUMBING | DRAFTED BY: CA | SHEET NO: |
| | SWINE AI SA BARANGAY (SWAIB) PROJECT | DR. RUTH MIGLAT-SONAGO | AS SHOWN | CHECKED BY: RA | PI 3 |
| PRG. NO. : VALIDITY : | | PROGRAM DIRECTOR | | DATE: | |
| PTR. NO. : DATE ISSUED: TIN No.: | | NATIONAL LIVESTOCK PROJECT | | REVISION NO.: | |