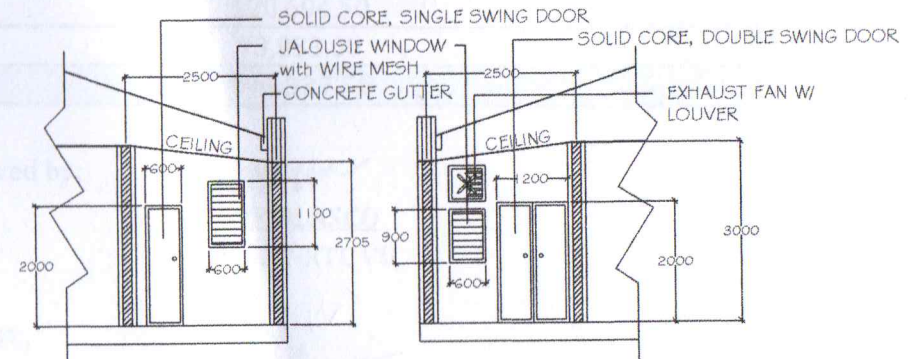


FOR REPAIR/REHABILITATION

SCOPE OF WORK

- CHIPPING WORKS
- REMOVAL AND REINSTALLATION OF LIGHTNING FIXTURES
- REMOVAL AND REPLACEMENT OF CEILING
- REMOVAL AND REPLACEMENT OF TILES
- ELEVATE FLOOR ELEVATION BY 15MM
- REMOVAL AND REPLACEMENT OF ALL DOORS AND WINDOWS
- RETROFITTING WORKS
- WATERPROOFING OF THE CONCRETE GUTTER
- CORRECTION OF ALL CRACKS ON WALLS
- INSTALLATION OF EXHAUST FAN
- REPAINTING WORKS
- IMPROVEMENT OF METAL STEEL RACKS
- REPLACEMENT OF BUSTED BULBS
- HAULING OF DEBRIS



SECTION A-A

SECTION B-B

CAFETERIA
FLOOR PLAN

SCALE 1:100 MTS